

BOOK 2

COURSE

**KINGSIDE SACRIFICES
AND COMBINATIONS**
(WITH PREPARATORY POSITIONS)

INTRODUCTORY MATERIALS

Ian Anderson

CHESS VISUALIZATION COURSE

BOOK 2: KINGSIDE SACRIFICES AND COMBINATIONS

(WITH PREPARATORY POSITIONS)

© Copyright 2010-2011 by Gelvert Publishing LLC

All rights reserved. No part of this work may be reproduced or transmitted in any form or by any means, electronic or mechanical, including photocopying and recording, or by any information storage or retrieval system, except for brief passages used in a review.

ISBN 978-0-9795940-3-8

ISBN 0-9795940-3-0

Published by:

Gelvert Publishing LLC

PO Box 116

Statesboro, GA 30459

Cover design and editing by Georgia Pearson.

Chess fonts designed by Eric Bentzen (bentzen@enpassant.dk);
see the Chess Alpha fonts at www.enpassant.dk. Used with permission.

Most of the analysis in this book was checked using Crafty, a chess analysis program written by Dr. Robert Hyatt, available either in ChessBase 7.0 (www.chessbase.com or www.chessbaseusa.com) or as a freeware package downloadable at ftp.cis.uab.edu/pub/hyatt.

Please visit our website at www.chessvisualization.com to purchase additional copies of this book or to see other *Chess Visualization Course* products and services.

TABLE OF CONTENTS

PLY TABLE.....	4
INTRODUCTION	7
SECTION 1. SACRIFICES ON F7.....	11
Chapter 1. Even Number of Attackers and Defenders on f7	13
Chapter 2. Extra Attacker on f7.....	29
Chapter 3. The Sequence 1 Nxf7 and 2 Qxe6	47
Chapter 4. The Squares f7 and e6.....	69
Chapter 5. The Squares f7 and g6	85
Chapter 6. The Squares f7 and h7	97
SECTION 2. SACRIFICES ON G6	121
Chapter 7. White Sacrifices a Piece on g6	123
Chapter 8. White Plays 1 Rxc6	137
Chapter 9. White Sacrifices Two Pieces on g6	157
SECTION 3. SACRIFICES ON H7	173
Chapter 10. White Plays 1 Nxc7 (Black Pawn on g6)	175
Chapter 11. White Plays 1 Nxc7 (No Black Pawn on g6)	197
Chapter 12. The Sequence 1 Bxc7 + and 2 Nxf7	207
Chapter 13. The Sequence 1 Bxc7+ Kxc7 2 Qh5+ Kg8 3 Qxf7+.....	221
Chapter 14. The Sequence 1 Bxc7+ Kxc7 2 Qxf7	241
Chapter 15. The Sequence 1 Rxc7 Kxc7 2 Qxf7	251
SECTION 4. THE CLASSIC BISHOP SACRIFICE ON H7.....	265
Chapter 16. The Sequence 1 Bxc7+ Kxc7 2 Ng5+ Kg8 3 Qh5	267
Chapter 17. The Sequence 1 Bxc7+ Kxc7 2 Ng5+ Kg6	283
Chapter 18. The Sequence 1 Bxc7+ Kxc7 2 Ng5+ Kg8 3 Qh5 (Black Ne7).....	305
Chapter 19. The Sequence 1 Bxc7+ Kxc7 2 Ng5+ Kg6 (Black Ne7).....	321
Chapter 20. The Sequence 1 Bxc7+ Kxc7 2 Ng5+ (Black Be7).....	341
SECTION 5. SACRIFICES ON THE DARK SQUARES (F6, G7, AND H6)	351
Chapter 21. The Sequence 1 Rxc7+ Kxc7 2 Qg5+	353
Chapter 22. The Sequence 1 Rxc7+ Kxc7 2 Rg1+	371
Chapter 23. The Sequence 1 Rxc7+ Kxc7 2 Miscellaneous	391
Chapter 24. The Sequence 1 Bxc6 gxc6 2 Qxc6	401
Chapter 25. The Sequence 1 Bxc6 gxc6 2 Qg6+ Kh8 3 Qxc6+	421
Chapter 26. White Plays 1 Nh6+.....	435
Chapter 27. White Plays 1 Nf6+	457
Chapter 28. White Plays 1 Rxc6	479
ANSWER KEY.....	501
APPENDIX 1. INDEX OF ECO CODES.....	563

PLY TABLE

The following table can be used in conjunction with the ply depth barriers discussed in the introduction to the book. The first column shows the chapter titles; the last column shows the total number of visualization exercises contained within each chapter (as well as the number of preparatory positions in parentheses). The top row indicates the length of the visualization exercises that range from five to seventeen and more half-moves (ply). A half-move is one move made by either White or Black; thus a variation that is eight half-moves long (or “eight ply”) contains four moves by White and four moves by Black. The line across each chapter shows how many exercises are contained in that chapter for each ply. For example, of the forty visualization exercises in Chapter 1, two of them are five half-moves (ply) long, two are six half-moves (ply) long, five are seven half-moves (ply) long, three are 8 half-moves long, six are 9 half-moves long, and so on.

LENGTH (HALF-MOVES OR PLY):	5	6	7	8	9	10	11	12	13	14	15	16	17+	TOTAL
SECTION 1. SACRIFICES ON F7														
1. EVEN NUMBER OF ATTACKERS ON F7	2	2	5	3	6	5	9	1	1	-	1	-	5	40 (43)
2. EXTRA ATTACKER ON F7	2	-	6	4	8	1	6	-	3	-	6	-	4	40 (60)
3. THE SEQUENCE 1 Nxf7 AND 2 Qxe6	4	-	6	2	8	1	5	2	5	1	4	-	6	44 (78)
4. THE SQUARES F7 AND E6	4	6	4	-	4	1	3	-	-	1	4	2	3	32 (54)
5. THE SQUARES F7 AND G6	2	-	1	-	4	-	4	1	2	-	-	-	6	20 (39)
6. THE SQUARES F7 AND H7	3	-	7	2	5	-	6	1	6	-	2	4	4	40 (103)
SECTION 2. SACRIFICES ON G6														
7. WHITE SACRIFICES A PIECE ON G6	1	-	2	-	6	-	6	-	8	-	-	-	1	24 (52)
8. WHITE PLAYS Rxc6	3	-	5	-	8	-	6	-	8	-	4	-	6	40 (68)
9. WHITE SACRIFICES TWO PIECES ON G6	-	-	3	-	5	-	1	-	3	-	4	-	8	24 (65)
SECTION 3. SACRIFICES ON H7														
10. WHITE PLAYS 1 Nxc7 (BLACK Pg6)	4	-	4	-	10	-	2	-	6	-	5	-	9	40 (93)
11. WHITE PLAYS 1 Nxc7 (NO BLACK Pg6)	1	1	2	-	2	-	1	-	-	-	1	-	8	16 (44)
12. THE SEQUENCE 1 Bh7+ AND 2 Nf7	4	-	8	-	3	1	2	-	1	1	2	-	6	28 (42)
13. 1 Bxc7+ Kxc7 2 Qh5+ Kg8 3 Qxf7+	-	-	2	-	2	1	2	1	8	-	6	-	10	32 (88)
14. 1 Bxc7+ Kxc7 2 Qxf7	-	-	2	1	1	-	3	-	2	-	3	-	4	16 (43)
15. 1 Rxc7+ Kxc7 2 Qxf7	-	-	-	-	8	-	9	-	6	-	1	-	4	28 (45)
SECTION 4. CLASSIC BISHOP SACRIFICE ON H7														
16. 1 Bxc7+ Kxc7 2 Ng5+ Kg8 3 Qh5	-	-	1	3	3	1	4	1	3	5	6	1	4	32 (40)
17. 1 Bxc7+ Kxc7 2 Ng5+ Kg6	-	-	-	-	3	1	4	6	4	-	5	1	8	32 (110)
18. 1 Bxc7+ Kxc7 2 Ng5+ Kg8 (Ne7)	-	-	-	-	1	-	6	1	1	-	9	-	10	28 (58)
19. 1 Bxc7+ Kxc7 2 Ng5+ Kg6 (Ne7)	-	-	1	-	2	-	-	5	7	-	3	-	10	28 (90)
20. 1 Bxc7+ Kxc7 2 Ng5+ (Be7)	-	-	1	-	1	-	8	1	1	-	1	-	3	16 (40)
SECTION 5. SACRIFICES ON THE DARK SQUARES														
21. 1 Rxc7+ Kxc7 2 Qg5+	2	-	8	2	10	-	8	2	3	-	1	-	-	36 (67)
22. 1 Rxc7+ Kxc7 2 Rg1+	3	-	5	-	9	1	4	-	6	-	2	-	2	32 (91)
23. 1 Rxc7+ Kxc7 2 MISCELLANEOUS	4	2	3	-	2	1	4	-	3	-	1	-	-	20 (36)
24. 1 Bxc6 Gxc6 2 Qxc6	2	-	4	-	6	2	8	-	6	2	4	-	2	36 (75)
25. 1 Bxc6 Gxc6 2 Qxc6+ Kh8 3 Qxc6	-	-	1	-	3	-	6	2	3	-	5	-	8	28 (46)
26. WHITE PLAYS 1 Nxc6+	8	2	7	-	7	-	3	-	3	-	2	-	8	40 (80)
27. WHITE PLAYS 1 Nf6+	14*	-	8	-	8	-	6	-	3	-	-	-	5	44 (76)
28. WHITE PLAYS 1 Rxc6(f6)	1	-	9	-	10	2	6	-	2	1	5	-	8	44 (76)
TOTALS FOR EACH PLY IN THE BOOK:														
	5	6	7	8	9	10	11	12	13	14	15	16	17+	TOTAL
	64*	13	105	17	145	18	132	24	104	11	87	8	152	880 (1802)

*Six of these fourteen exercises are 3-ply.

INTRODUCTION

This second book of the *Chess Visualization Course* continues the systematic and practical approach to chess visualization begun in Book 1, this time using 880 visualization exercises that feature kingside sacrifices and combinations that occur on the six squares in front of Black's kingside castled King -- f7, g7, and h7 on the 7th rank and f6, g6, and h6 on the 6th rank. Thus this book provides a dual purpose. It gives you the opportunity to practice your chess visualization skills while exploring almost 900 exercises involving kingside sacrifices and combinations. This book also contains more than 1800 preparatory positions derived from the visualization exercises which highlight the various mating patterns and other key ideas associated with each type of sacrifice or combination.

DESCRIPTION OF THE SECTIONS AND CHAPTERS

This book contains five sections, each of which focuses on a particular square or set of squares in front of Black's castled King, as follows:

- ✧ Section 1 covers kingside sacrifices and combinations that occur on f7;
- ✧ Section 2 covers kingside sacrifices and combinations that occur on g6;
- ✧ Section 3 covers kingside sacrifices and combinations that occur on h7;
- ✧ Section 4 covers the classic Bishop sacrifice on h7;
- ✧ Section 5 covers kingside sacrifices and combinations that occur on the three dark squares in front of Black's King (f6, g7, and h6).

The chapters within each section provide in-depth coverage of the general themes that characterize each section. For example, Section 2, which covers sacrifices on g6, contains three chapters, each of which features a different type of sacrifice on g6: Chapter 7 covers one-piece sacrifices on g6, Chapter 8 covers Rook sacrifices on g6, and Chapter 9 covers two-piece sacrifices on g6.

Each chapter in this book contains between 16 and 44 visualization exercises arranged by the length of the variation that you are asked to visualize. Most of the exercises (643 of them, to be exact) range from 7 to 15 ply and another 160 exercises are 16 ply or longer. The longest exercises are 27 ply (see numbers 360 in Chapter 11 and 436 in Chapter 15), while six of the exercises are 3 ply (see Chapter 27). The visualization exercises are arranged in a quad structure with four exercises per page.

PREPARATORY POSITIONS

Each chapter also includes a set of preparatory positions that focuses on the final moves of the visualization exercises from which they are derived. They are included primarily to help the average tournament player visualize the longer variations in this book (44% of the exercises are 12 ply or longer). They appear before the visualization exercises and are grouped by theme to show more clearly the various ideas and patterns that arise from each type of sacrifice or combination presented. Each preparatory position is numbered from 1 to 1802, followed by a code in square brackets that indicates the number of the visualization exercise ("VX") that it was taken from. For example, the code [VX-9] in the first preparatory position indicates that it was derived from visualization exercise number 9.

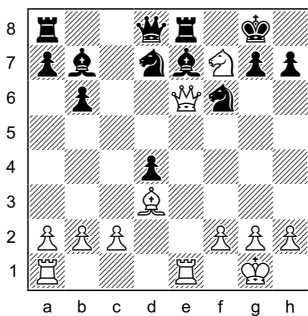
PATTERN RECOGNITION

Most chess players know the importance of pattern recognition, yet there are so few books that illustrate exactly what these patterns are. Certainly there are books that deal with the basic types of mate, such as back rank mates and smothered mates, but once you get past the basics it's difficult to find suitable materials. An important feature of this book is that by creating more than 1800 preparatory positions and grouping them into themes we are able to show clearly the various patterns and key ideas relevant for each type of sacrifice or combination featured in each chapter. For example, the preparatory positions in Chapter 16, which covers the classic Bishop sacrifice with the moves 1 Bxh7+ Kxh7 2 Ng5+ Kg8 3 Qh5, show the mating patterns and key ideas that occur in positions that arise after these moves have been played. Similarly the preparatory positions in Chapter 27, which covers the move 1 Nf6+ by White, show the mating patterns and key ideas that occur in positions that arise after White has put his Knight *en prise* on f6.

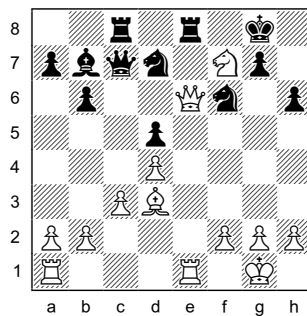
PATTERNS, SUB-PATTERNS, AND VARIATIONS ON A THEME

Many of the patterns in chess are not simply "cookie-cutter" type patterns with moves that can be played thoughtlessly without considering the specific position of the pieces on the board at the time. Most patterns have sub-patterns that feature a slight but important difference in the generic position that typifies the main pattern. Even a subtle difference in the position can either nullify or alter the main pattern and thus create a related sub-patterns. We call such sub-patterns "variations on a theme" (VT), borrowing an expression found in music theory.

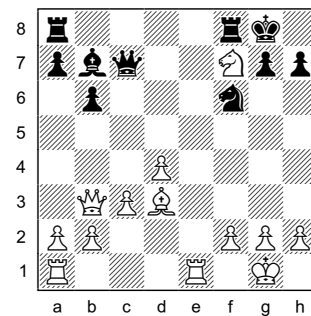
Take, for example, the pattern of the smothered mate. Diagram VT-1 below shows a typical three-move smothered mate where White wins with 1 Nh6+ Kh8 2 Qg8+ Nxg8 3 Nf7, mate. Diagram VT-2 shows two variations on this theme, where Black's h-pawn is on h6 instead of h7, which normally would nullify the smothered mate, since Black's King would be able to escape to h7, but here White's Bc2 covers that square and thus the smothered mate is still on. Another important variation on this theme involves positions in which Black controls f7 with a piece other than his Rf8. This is seen in Diagram VT-3 where Black can answer 1 Nh6+ Kh8 2 Qg8+ with 2...Rxxg8, when 3 Nf7+ fails because Black's Qc7 is defending f7.



VT-1. White wins with 1 Nh6+ (1...Kf8 loses to 2 Qf7, mate) Kh8 2 Qg8+ Nxg8 3 Nf7, mate.

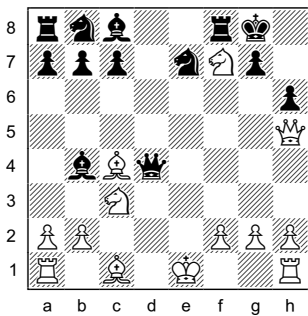


VT-2. White's Queen is under attack, but wins with 1 Nxh6+ Kh8 (1...Kf8 loses to 2 Qf7, mate) 2 Qg8+ Rxxg8 3 Nf7, mate.

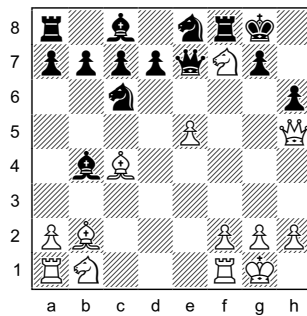


VT-3. Here 1 Nxh6+ Kh8 2 Qg8+ loses to 2...Rxxg8, since 3 Nf7 can be met by 3...Qxf7.

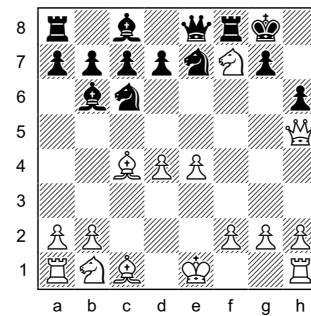
The next set of diagrams (from Chapter 2) illustrates another pattern and variation on a theme. In each diagram White has a Knight on f7 supported by a Bishop on the a2-g8 diagonal and a Queen on h5, with Black's King on g8. The first two diagrams (VT-4 and VT-5) show the basic two-move mating pattern with 1 Nxh6+ Kh8 (1...Kh7 doesn't change anything) followed by either 2 Ng4, 2 Nf5, or 2 Ng8, mate. In diagram VT-6, however, the situation is different because Black's Qe8 will be attacking White's Qh5 after White's Knight moves off of f7. Therefore White needs to come up with a way to address this important difference in the position. After 1 Nxh6+ Kh8/Kh7, White can block the e8-h5 diagonal with 2 Nf7+, safeguarding the Qh5, when 2...Kg8 loses to 3 Qh8, mate. These three diagrams illustrate a basic two-move mating pattern and a variation on this theme.



VT-4. White wins with 1 Nxh6+ Kh7 (or 1...Kh8) 2 Nf5/Ng4/Ng8, mate.

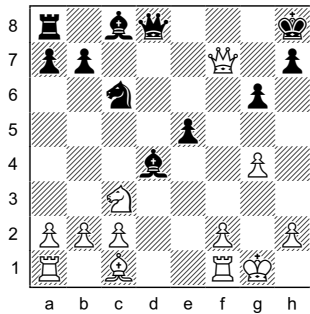


VT-5. White wins with 1 Nxh6+ Kh7/Kh8 2 Ng4/Nf5/Ng8, mate.

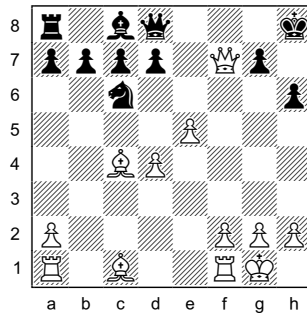


VT-6. White win with 1 Nxh6+ Kh7/Kh8 2 Nf7+ (other moves drops the Qh5) Kg8 3 Qh8, mate.

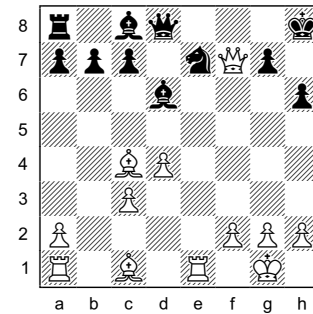
The next set of examples (also from Chapter 2) illustrates once more the idea of variations on a theme. Each diagram features a White Queen on f7, a Black King on h8, and the move 1 Bg5 by White. Yet even though these positions share these same general characteristics, the dynamics within each position are slightly different. In VT-7, for example, Black's Qd8 seems to control the g5 square, but in reality it's tied to the defense of f8, allowing White to play 1 Bg5, threatening both 2 Bxd8 and 2 Bf6, mate, when 1...Qxg5 loses to 2 Qf8, mate. In VT-8 the g5 square seems to be controlled by two of Black's pieces, but again White is able to play the winning move 1 Bg5. In VT-9 White is down a piece, but can win it back with 1 Bg5, even though the g5 square seems to be defended by Black's pawn on h6.



VT-7. White mates in three with 1 Bg5 Qg8 (1...Qxg5 loses to 2 Qf8, mate) 2 Bf6+ Qg7 3 Qxg7/Bxg7, mate.



VT-8. 1 Bg5 wins Black's Queen with, since 1...hxg5 loses to 2 Qh5, mate, and 1...Qxg5 loses to 2 Qg8, mate.



VT-9. White is down a piece, but can win Black's Knight with 1 Bg5, since 1...hxg5 loses to 2 Qh5, mate.

The preparatory positions not only highlight the winning patterns and key ideas relevant for each chapter, they show them near the beginning of each line of play (here at ply 1), whereas in the visualization exercises these ideas and patterns typically show up near the end of the line given (here at ply 5 of a 9-ply exercise, ply 9 of an 11-ply exercise, and ply 10 of a 15-ply exercise).

HOW TO USE THIS BOOK

This book may seem daunting at first because of its length (564 pages), yet each chapter averages fewer than 20 pages. You may work on the chapters in any sequence, although it is probably best to work on one section at a time, since the chapters in each section explore similar themes and thus the patterns will reinforce each other.

Each chapter in this book contains an introduction, a set of preparatory positions, and a set of visualization exercises. The introduction presents an overview of the sacrifice or combination featured in the chapter and illustrates that idea using at least two diagrams. The preparatory positions in each chapter illustrate the key moves and ideas seen in the visualization exercises of each chapter and are included to help you visualize the final moves of the visualization exercises better. The visualization exercises provide you with an opportunity to practice your visualization skills relating to kingside sacrifices and combinations that occur on the six squares in front of Black's King.

Each visualization exercises consists of a diagrammed position followed by a series of moves that you are asked to visualize. Using the diagrammed position as a starting point, mentally play through the moves given, keeping track of which pieces are on the board, the positions they occupy, the threats they create, and the material balance. Visualize all of the moves given through to the final position if you can, then answer the question(s) provided. The answers can be found in the answer key at the end of the book. It is White to move in every exercise.

Please keep in mind that it's not necessary to work on every exercise of every chapter. If you find it difficult to visualize variations that run 11 ply, then it doesn't make a lot of sense to work on exercises that are 15 ply or longer. Please keep your ply depth barrier in mind as you work through the exercises in this book.

PLY DEPTH BARRIERS

Once you have gone through a number of exercises in this book, you will probably notice that there is some depth at which you are unable to clearly visualize certain variations all the way through to the final position. Perhaps you can

clearly visualize variations that are 11 ply deep, but have difficulty clearly visualizing variations that are 12 or 13 ply. We call this ceiling your *ply depth barrier*. It is the depth at which your vision breaks down and you can no longer clearly visualize the final position.

There are three techniques for dealing with the ply depth barrier – *brute force*, *consolidation*, and *stretching*.

The *brute force* method consists in attempting to visualize variations that are the same length as your depth barrier. If your depth barrier is 11 ply, then go through all of the 11-ply exercises in the book and attempt to visualize the final position clearly.

Consolidation consists in visualizing variations that are slightly shorter than your depth barrier. The principle here is that if you cannot fully visualize 11-ply exercises, then it's possible that the 9- and 10-ply exercises are not quite crystal clear either. Therefore, if your barrier is at 11 ply, make sure that you can visualize all of the 9- and 10-ply exercises clearly and confidently.

Stretching consists in attempting to visualize variations that are slightly longer than your depth barrier. If your depth barrier is 11 ply, try to visualize the 12- and 13-ply exercises. After working on these exercises for a while, you may find that the 11-ply exercises seem easier by comparison.

See the ply table provided after the table of contents to find the exercises you need. It shows how many exercises at each ply are in the book and the chapters where they can be found.

It was my desire to create a book that builds on the visualization work begun in Book 1, this time focusing on kingside sacrifices and combinations. Writing this book the past three years has been a very gratifying experience for me, one that has helped me stretch beyond my previous limitations in visualizing variations and improve my ability to conduct and defend against kingside attacks. It is my hope that you will see similar improvement in your own play and gain the same sense of gratification that I have felt when breaking through past barriers.

Statesboro, GA
December 22, 2010

SECTION 1. SACRIFICES ON F7

This section contains exercises in which White captures a Black pawn on f7 with one of his pieces. It includes the following chapters:

CHAPTER 1. EVEN NUMBER OF ATTACKERS AND DEFENDERS ON F7

CHAPTER 2. EXTRA ATTACKER ON F7

CHAPTER 3. THE SEQUENCE 1 Nxf7 AND 2 Qxe6

CHAPTER 4. THE SQUARES F7 AND E6

CHAPTER 5. THE SQUARES F7 AND G6

CHAPTER 6. THE SQUARES F7 AND H7

CHAPTER 1, EVEN NUMBER OF ATTACKERS AND DEFENDERS ON F7, contains exercises in which the number of White pieces attacking f7 is equal to the number of Black pieces defending f7, when one of Black's defenders is the King. One of the main ideas for White in this chapter is to exchange all of the pieces on f7, leaving Black's Kf7 exposed to a variety of tactics.

CHAPTER 2, EXTRA ATTACKER ON F7, contains exercises in which White has or can get an extra attacker on f7, which allows White to sink a piece on f7, often with advantage.

CHAPTER 3, THE SEQUENCE 1 Nxf7 AND 2 Qxe6, contains exercises in which White plays 1 Nxf7 and 2 Qxe6, when White has sacrificed a piece for a pawn on f7, but has obtained a powerful Queen on e6.

CHAPTER 4, THE SQUARES F7 AND E6, contains exercises in which White sacrifices a piece on f7, then occupies the e6 square with something other than his Queen.

CHAPTER 5, THE SQUARES F7 AND G6, contains exercises in which White captures Black's pawn on f7, then occupies the g6 square.

CHAPTER 6, THE SQUARES F7 AND H7, contains exercises in which White sacrifices a piece for Black's pawn on f7, which is defended only by the King, and after 1...Kxf7 White captures Black's pawn on h7 with either 2 Qxh7+ or 2 Rxh7+.

CHAPTER 1. EVEN NUMBER OF ATTACKERS AND DEFENDERS ON F7

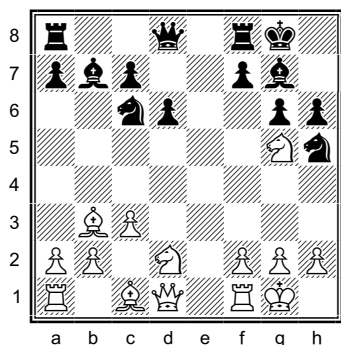


Diagram 1

This chapter contains exercises in which the number of White pieces attacking f7 is equal to the number of Black pieces defending f7, when one of Black's defenders is the King. One of the main ideas for White is to exchange all of the pieces on f7, leaving Black's Kf7 exposed to a variety of tactics.

In Diagram 1, the count on f7 is 2-2 and Black's Bishop on b7 is undefended. After the moves 1 Nxf7 Rxf7 2 Bxf7+ Kxf7 (see Diagram 2), White wins a piece with 3 Qb3+ and 4 Qxb7, when White is up the exchange and a pawn.

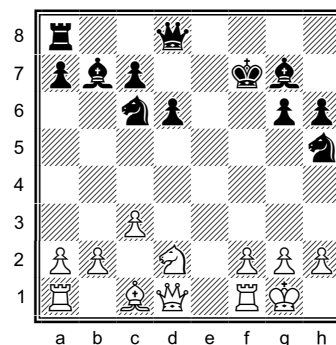


Diagram 2

The following themes are frequently seen in this chapter:

1. Double Attack by White's Queen
2. Knight Forks
3. Miscellaneous Pins
4. Pins along the f-file
5. Miscellaneous Tactics
6. Pieces of Different Value
7. Winning on the Queenside
8. Mates

These themes are illustrated using forty-three preparatory positions, which are followed by forty visualization exercises ranging in depth from five to nineteen ply, distributed as follows:

Ply:	5	6	7	8	9	10	11	12	13	14	15	16	17 ⁺	TOTAL
Exercises:	2	2	5	3	6	5	9	1	1	-	1	-	5	40

CHAPTER 2. EXTRA ATTACKER ON F7

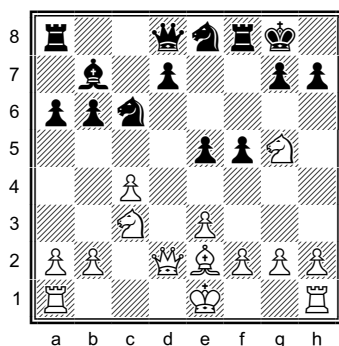


Diagram 1

This chapter contains exercises in which White has or can get an extra attacker on f7, which allows White to sink a piece on f7, often with advantage.

In Diagram 1 the count on f7 is 1-2, but after the moves 1 Qd5+ Kh8, White has gain a 2-1 advantage on f7 (see Diagram 2), when 2 Nf7+ forks Black's King and Queen and wins the exchange after 2...Rxf7 3 Qxf7.

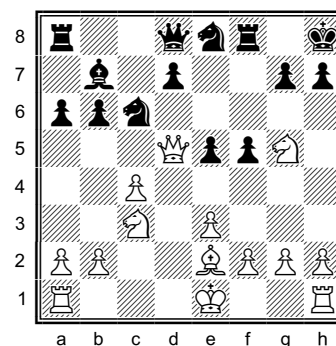


Diagram 2

The following themes are frequently seen in this chapter:

1. White Wins Material with the Move Nf7+
2. White Wins Material by Freeing up f7
3. Mates Involving the Move Nxf6+
4. Mates Involving the Move Ng6+
5. Mates Involving the Maneuver Ng6-f8 with Qh7
6. White Plays Bg5
7. Back Rank Mates
8. Attacking g7
9. Attacking along the Diagonals
10. Miscellaneous Mates
11. Mate Threat Wins Black's Queen
12. Miscellaneous Tactics
13. King Hunts

These themes are illustrated using sixty preparatory positions, which are followed by forty visualization exercises ranging in depth from five to twenty-one ply, distributed as follows:

Ply:	5	6	7	8	9	10	11	12	13	14	15	16	17+	TOTAL
Exercises:	2	-	6	4	8	1	6	-	3	-	6	-	4	40

CHAPTER 3. THE SEQUENCE 1 Nxf7 AND 2 Qxe6

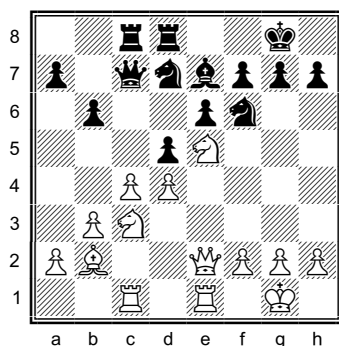


Diagram 1

This chapter contains exercises in which White plays 1 Nxf7 and 2 Qxe6, when White has sacrificed a piece for a pawn on f7, but has obtained a powerful Queen on e6. A similar situation can occur if White sacrifices a Bishop on g6 with the moves 1 Bg6 fxg6 2 Qxe6+.

In Diagram 1, after the moves 1 Nxf7 Kxf7 2 Qxe6+ (see Diagram 2), if Black plays 2...Kf8, then after 3 Qxe7+ White is up a couple of pawns and will answer 3... Kg8 with 4 Nb5-d6, with a

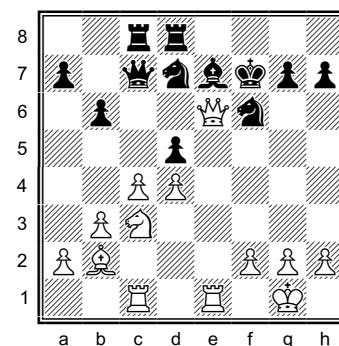


Diagram 2

strong attack, while if 2...Kg6 then 3 Nxd5 threatens both 4 Nxc7 and 4 Nxe7+, winning back the piece and forking Black's Kg6 and Rc8.

The following themes are frequently seen in this chapter:

1. Miscellaneous Tactics
2. Pins
3. Smothered Mate
4. The Threat of Smothered Mate Wins Material
5. The Sequence Bg6 and Qf7
6. Checkmate from a Rook Lift
7. Miscellaneous Mates
8. How to Meet ...Be7-g5, Discovering an Attack on White's Qe6
9. Defensive Ideas for Black

These themes are illustrated using seventy-eight preparatory positions, which are followed by forty-four visualization exercises ranging in depth from five to twenty-four ply, distributed as follows:

Ply:	5	6	7	8	9	10	11	12	13	14	15	16	17⁺	TOTAL
Exercises:	4	-	6	2	8	1	5	2	5	1	4	-	6	

CHAPTER 4. THE SQUARES F7 AND E6

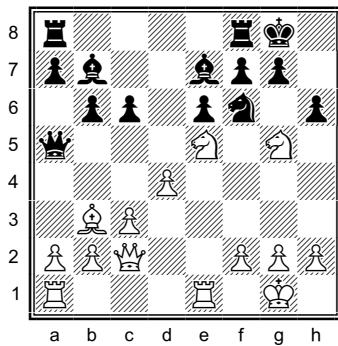


Diagram 1

This chapter contains exercises in which White sacrifices a piece on f7, then occupies the e6 square with something other than his Queen.

In Diagram 1, for example, after the moves 1 Ngxf7 Rxf7 2 Bxe6 Raf8 (see Diagram 2), 3 Nxf7 wins a Rook, leaving White up the exchange and two pawns. Note that Black can't play 3...Rxf7 here because of 4 Qg6, which wins Black's pinned Rf7.

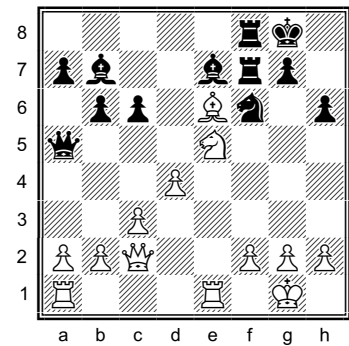


Diagram 2

The following themes are frequently seen in this chapter:

1. Miscellaneous Tactics
2. Discovered Attack
3. Pins
4. Mates
5. White Plays Ne6
6. King Hunts
7. Comparing Various Captures on e6 (Rxe6, Bxe6, Pxe6)

These themes are illustrated using fifty-four preparatory positions, which are followed by thirty-two visualization exercises ranging in depth from five to twenty-five ply, distributed as follows:

Ply:	5	6	7	8	9	10	11	12	13	14	15	16	17 ⁺	TOTAL
Exercises:	4	6	4	-	4	1	3	-	-	1	4	2	3	32

CHAPTER 5. THE SQUARES F7 AND G6

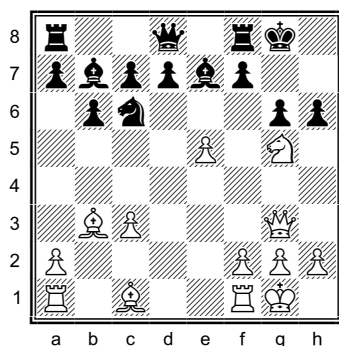


Diagram 1

This chapter contains exercises in which White captures Black's pawn on f7, then occupies the g6 square.

In Diagram 1, the count on f7 is 2-2, but White wins with 1 Nxf7, when Black can't move his Queen because of 2 Qxg6, mate, while 1...Rxf7 loses to 2 Qxg6+ (see Diagram 2), e.g., 2...Kf8 3 Qxf7, mate, or 2...Kh8 3 Bxf7, when White is up the exchange and a pawn and threatens 4 Qh6, mate.

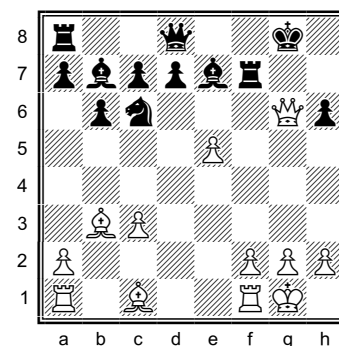


Diagram 2

The following themes are frequently seen in this chapter:

1. White Dominates the f7 Square
2. Black Doesn't Take on f7
3. Black Takes on f7 with his Rook
4. Black Takes on f7 with his Rook, White has a Knight on g5
5. Black Takes on f7 with his King
6. Positions with White's Queen on g6

These themes are illustrated using thirty-nine preparatory positions, which are followed by twenty visualization exercises ranging in depth from five to nineteen ply, distributed as follows:

Ply:	5	6	7	8	9	10	11	12	13	14	15	16	17+	TOTAL
Exercises:	2	-	1	-	4	-	4	1	2	-	-	-	6	20

CHAPTER 6. THE SQUARES F7 AND H7

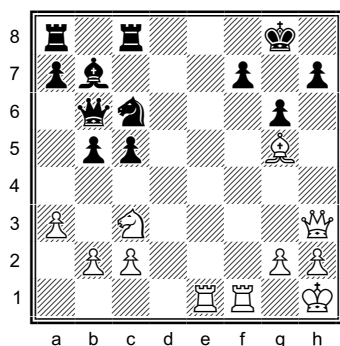


Diagram 1

This chapter contains exercises in which White sacrifices a piece for Black's pawn on f7, which is defended only by the King, and after 1...Kxf7 White captures Black's pawn on h7 with either 2 Qxh7+ or 2 Rxh7+.

In Diagram 1, after the moves 1 Rxf7 Kxf7 2 Qxh7+ (see Diagram 2), Black's only move is 2...Kf8, which loses to 3 Bh6, mate.

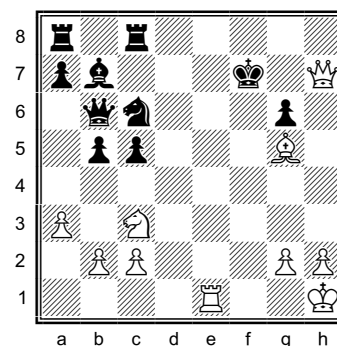


Diagram 2

The following themes are frequently seen in this chapter:

1. Using the f-file to Win a Piece on g7
2. Mates and Tactics Involving the f-file
3. Mates and Tactics Involving the Move Qxg6
4. Mates and Tactics Involving the Move Bxg6
5. Mates along the 7th Rank
6. Back Rank Mates
7. Mates by the Queen
8. Mates by a Minor Piece
9. King Hunts
10. Miscellaneous Mates
11. Miscellaneous Tactics

These themes are illustrated using one hundred and three preparatory positions, which are followed by forty visualization exercises ranging in depth from five to nineteen ply, distributed as follows:

Ply:	5	6	7	8	9	10	11	12	13	14	15	16	17 ⁺	TOTAL
Exercises:	3	-	7	2	5	-	6	1	6	-	2	4	4	40

SECTION 2. SACRIFICES ON G6

This section contains exercises in which White sacrifices one or more pieces for a Black pawn on g6. It includes the following chapters:

CHAPTER 7. WHITE SACRIFICES A PIECE ON G6

CHAPTER 8. WHITE PLAYS 1 RXG6

CHAPTER 9. WHITE SACRIFICES TWO PIECES ON G6

CHAPTER 7, WHITE SACRIFICES A PIECE ON G6, contains exercises in which White sacrifices a piece for two pawns on g6 in order to obtain a dominant Queen on g6 or some other positional advantage. The typical sequence is either 1 Nxg6 fxg6 2 Qxg6 or 1 Bxg6 fxg6 2 Qxg6.

CHAPTER 8, WHITE PLAYS 1 RXG6, contains exercises in which White sacrifices a Rook for two pawns on g6 in order to obtain a dominant Queen on g6 or some other positional advantage. The typical sequence is 1 Rxg6+ fxg6 2 Qxg6+.

CHAPTER 9, WHITE SACRIFICES TWO PIECES ON G6, contains exercises in which White sacrifices two pieces for three pawns on g6 in order to obtain a dominant Queen on g6 or some other positional advantage. This can come about via two different sequences -- a) 1 Nxg6 fxg6 2 Bxg6 hxg6 3 Qxg6+ or b) 1 Nxh7 Kxh7 2 Qh5+ Kg8 3 Bxg6 fxg6 4 Qxg6+.

CHAPTER 7. WHITE SACRIFICES A PIECE ON G6

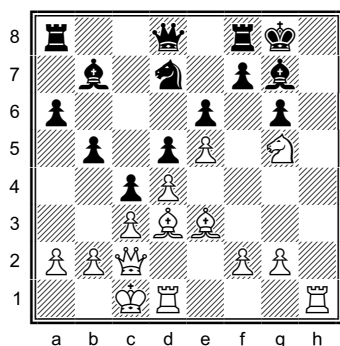


Diagram 1

This chapter contains exercises in which White sacrifices a piece for two pawns on g6 in order to obtain a dominant Queen on g6 or some other positional advantage.

In Diagram 1, after the moves 1 Bxg6 fxg6 2 Qxg6 White has given up a piece for two pawns (see Diagram 2), but has a dominant Queen on g6 and threatens 3 Qh7, mate. If Black creates an escape square on f8 by playing either 2...Re8 or 2...Rf5, then White wins with 3 Rh8+ Kxh8 4 Qh7, mate.

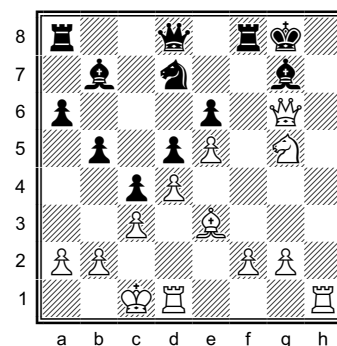


Diagram 2

The following themes are frequently seen in this chapter:

1. The Idea of Qh7, Mate
2. White Plays Qg7
3. Mating with the Queen and Bishop
4. The Weakness on e8
5. The Open h-file
6. Rook Lifts
7. Black Refuses to Take White's Ng6
8. Miscellaneous

These themes are illustrated using fifty-two preparatory positions, which are followed by twenty-four visualization exercises ranging in depth from five to twenty-one ply, distributed as follows:

Ply:	5	6	7	8	9	10	11	12	13	14	15	16	17+	TOTAL
Exercises:	1	-	2	-	6	-	6	-	8	-	-	-	1	24

CHAPTER 8. WHITE PLAYS 1 R×G6

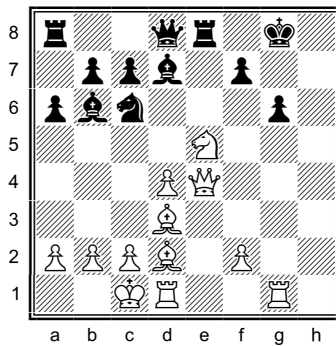


Diagram 1

This chapter contains exercises in which White sacrifices a Rook for two pawns on g6 in order to obtain a dominant Queen on g6 or some other positional advantage.

In Diagram 1, after the moves 1 R×g6 fxg6 2 Qxg6+ (see Diagram 2), White has given up a Rook for two pawns, but has obtained a dominant Queen on g6 and now wins after either 2...Kf8 3 Qf7, mate, or 2...Kh8 3 Nf7, mate.

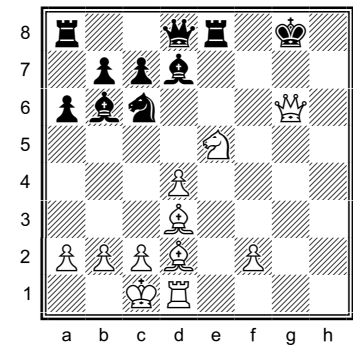


Diagram 2

The following themes are frequently seen in this chapter:

1. Black's King is on h8
2. Black's King is on f8
3. Black's King is on g8
4. Black Refuses the Rg6 and Plays 1...Kh8
5. Black Refuses the Rg6 and Plays 1...Kf7
6. Black Refuses the Rg6 and Plays 1...Kf8
7. Black Refuses the Rg6 and Interposes a Piece on g7

These themes are illustrated using sixty-eight preparatory positions, which are followed by forty visualization exercises ranging in depth from five to twenty-three ply, distributed as follows:

Ply:	5	6	7	8	9	10	11	12	13	14	15	16	17 ⁺	TOTAL
Exercises:	3	-	5	-	8	-	6	-	8	-	4	-	6	40

CHAPTER 9. WHITE SACRIFICES TWO PIECES ON G6

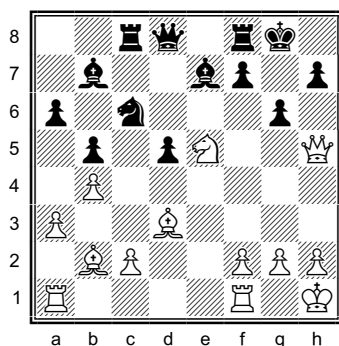


Diagram 1

This chapter contains exercises in which White sacrifices two pieces for three pawns on g6 in order to obtain a dominant Queen on g6 or some other positional advantage.

In Diagram 1, after the moves 1 Nxg6 fxg6 2 Bxg6 (see Diagram 2) Black can't play 2...hxg6 because of 3 Qxg6+, mate, but other moves also lose, e.g., 2...Bf6 3 Qxh7, mate; 2...Rf6 3 Qxh7+ Kf8 4 Qh8, mate; or 2...Rf7 3 Bxf7+ Kf8 4 Be6, threatening 5 Qf7, mate, and if 4...Qe8 then 5 Qh6 is mate.

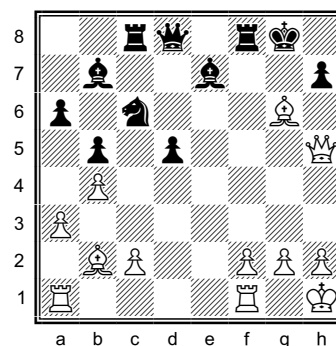


Diagram 2

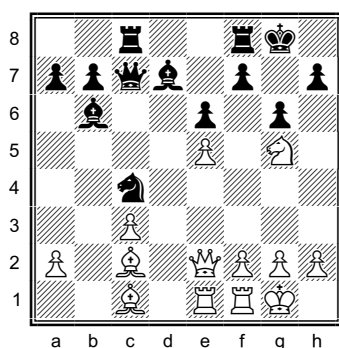


Diagram 3

White can also sacrifice two pieces for three pawns and obtain a Queen on g6 using a different move order (see Diagram 3), e.g., 1 Nxh7 Kxh7 2 Qh5+ Kg8 3 Bxg6 fxg6 4 Qxg6+ (see Diagram 4). After 4...Kh8 5 Re4, White threatens 6 Rh4, mate, when 5...Qd8 defends h4 but loses to 6 Qh5+ Kg7 7 Rg4+ Qg5 8 Rxc5, mate.

Note that 2...Kg7 (instead of 2...Kg8 in Diagram 3) doesn't change anything, as White obtains the same position after 3 Qh6+ Kg8 4 Bxg6 fxg6 5 Qxg6+.

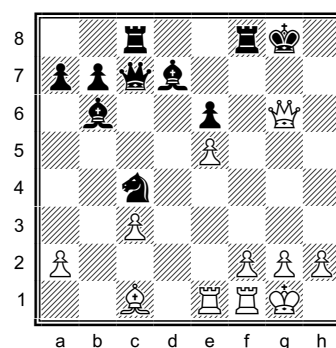


Diagram 4

The following themes are frequently seen in this chapter:

1. Black Responds to Qxg6+ with ...Kh8
2. Black Responds to Qxg6+ with ...Kf8
3. Black's King is on g8
4. Miscellaneous Mates
5. Black Refuses to Take White's Ng6
6. Black Refuses to Take White's Bg6

These themes are illustrated using sixty-five preparatory positions, which are followed by twenty-four visualization exercises ranging in depth from seven to twenty-three ply, distributed as follows:

Ply:	5	6	7	8	9	10	11	12	13	14	15	16	17+	TOTAL
Exercises:	-	-	3	-	5	-	1	-	3	-	4	-	8	24

SECTION 3. SACRIFICES ON H7

This section contains exercises in which White sacrifices a piece for a Black pawn on h7. It includes the following chapters:

CHAPTER 10. WHITE PLAYS 1 NXH7 (BLACK PAWN ON G6)

CHAPTER 11. WHITE PLAYS 1 NXH7 (NO BLACK PAWN ON G6)

CHAPTER 12. THE SEQUENCE 1 BXH7 + AND 2 NXF7

CHAPTER 13. THE SEQUENCE 1 BXH7+ KXH7 2 QH5+ KG8 3 QXF7+

CHAPTER 14. THE SEQUENCE 1 BXH7+ KXH7 2 QXF7

CHAPTER 15. THE SEQUENCE 1 RXH7 KXH7 2 QXF7

CHAPTER 10, WHITE PLAYS 1 NXH7 (BLACK PAWN ON G6), contains exercises in which White plays 1 Nxb7 when Black has a pawn on g6.

CHAPTER 11, WHITE PLAYS 1 NXH7 (NO BLACK PAWN ON G6), contains exercises in which White plays Nxb7 when Black doesn't have a pawn on g6.

CHAPTER 12, THE SEQUENCE 1 BXH7 + AND 2 NXF7, contains exercises involving the sequence 1 Bxb7+ followed by 2 Nxf7.

CHAPTER 13, THE SEQUENCE 1 BXH7+ KXH7 2 QH5+ KG8 3 QXF7+, contains exercises involving the sequence 1 Bxb7+ Kxb7 2 Qh5+ Kg8 3 Qxf7+, when White has sacrificed a piece for two pawns, but has obtained a dominant Queen on f7 that forces Black's King to the open h-file.

CHAPTER 14, THE SEQUENCE 1 BXH7+ KXH7 2 QXF7, contains exercises involving the sequence 1 Bxb7+ Kxb7 2 Qxf7, when White has sacrificed a piece for two pawns, but has obtained a dominant Queen on f7 that opposes Black's King on h7.

CHAPTER 15, THE SEQUENCE 1 RXH7 KXH7 2 QXF7, contains exercises involving the sequence 1 Rh7 Kxb7 2 Qxf7, when White has sacrificed a Rook for a pawn, but has obtained a dominant Queen on f7 that opposes Black's King on h7.

CHAPTER 10. WHITE PLAYS 1 N×H7 (BLACK PAWN ON G6)

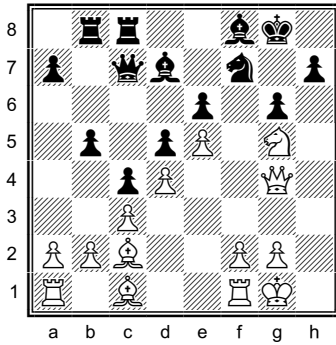


Diagram 1

This chapter contains exercises in which White plays 1 N×h7 when Black has a pawn on g6.

In Diagram 1, after the moves 1 N×h7 K×h7 (1...Bg7 drops a second pawn to 2 Q×g6), White wins with 2 Q×g6+ Kh8 3 Qh7, mate.

Diagram 2 shows the same idea but with an extra move, e.g., 1 N×h7 K×h7 (1...Rf7 Ng5 just concedes the pawn) 2 Qh5+ Kg7 3 Q×g6+ Kh8 4 Qh7, mate.

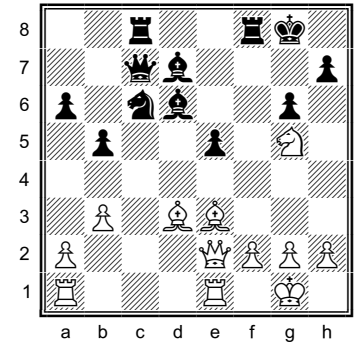


Diagram 2

The following themes are frequently seen in this chapter:

1. The Idea of Qg7, Mate
2. The Idea of Qh7, Mate
3. Black Bg7 vs White Bg6 and Qh5
4. Black Bg7 vs White Bg6
5. King Hunts
6. Miscellaneous Mates
7. Miscellaneous Tactics
8. Black Refuses to Take the Nh7

These themes are illustrated using ninety-three preparatory positions, which are followed by forty visualization exercises ranging in depth from five to twenty-three ply, distributed as follows:

Ply:	5	6	7	8	9	10	11	12	13	14	15	16	17+	TOTAL
Exercises:	4	-	4	-	10	-	2	-	6	-	5	-	9	40

CHAPTER 11. WHITE PLAYS 1 N_xH7 (NO BLACK PAWN ON G6)

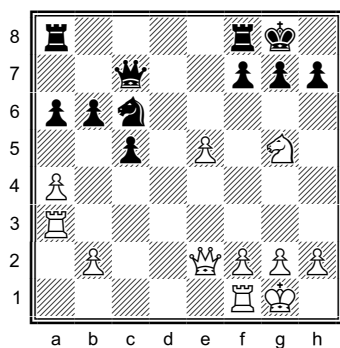


Diagram 1

This chapter contains exercises in which White plays N_xh7 when Black doesn't have a pawn on g6.

In Diagram 1, note that White has a Rook on a3 that is ready to join the attack. After the moves 1 N_xh7 K_xh7 2 Qh5+ K_g8 (see Diagram 2), White wins with 3 R_h3, threatening 4 Q_h7, mate. If Black creates an escape square on f7 with either 3...f6 or 3...f5, then 4 e6 controls f7, when Black can no longer prevent Q_h7, mate.

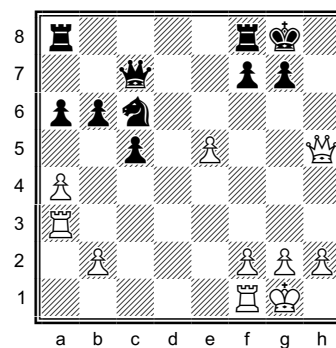


Diagram 2

The following themes are frequently seen in this chapter:

1. The Idea of Q_g7, Mate
2. White Plays Q_h5 and N_g5
3. Queen Sacrifices
4. Operations along the h-file
5. King Hunt
6. Miscellaneous Tactics
7. Miscellaneous Mates
8. Black Refuses to Take the N_h7

These themes are illustrated using forty-four preparatory positions, which are followed by sixteen visualization exercises ranging in depth from five to twenty-seven ply, distributed as follows:

Ply:	5	6	7	8	9	10	11	12	13	14	15	16	17⁺	TOTAL
Exercises:	1	1	2	-	2	-	1	-	-	-	1	-	8	16

CHAPTER 12. THE SEQUENCE 1 Bxh7 + AND 2 Nxf7

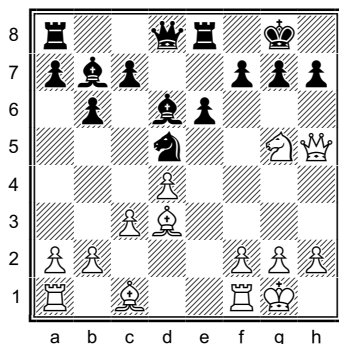


Diagram 1

This chapter contains exercises involving the sequence 1 Bxh7+ followed by 2 Nxf7. Typically White has an extra attacker on h7, which is generally defended only by Black's King.

In Diagram 1, not so good is 1 Qxh7+ Kf8 2 Qh8+, when Black's King can escape to e7, but White wins quickly with 1 Bh7+, e.g., 1...Kf8 2 Qxf7, mate, or 1...Kh8 (see Diagram 2) 2 Nxf7, mate.

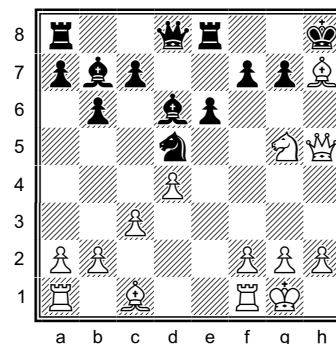


Diagram 2

The following themes are frequently seen in this chapter:

1. Miscellaneous Tactics
2. Black's King is on h8 – White Mates or Wins Black's Queen
3. Black's King is on h8 – White Wins Material
4. Black's King is not on h8 -- White Plays Bh7 and Qg6

These themes are illustrated using forty-two preparatory positions, which are followed by twenty-eight visualization exercises ranging in depth from five to twenty-five ply, distributed as follows:

Ply:	5	6	7	8	9	10	11	12	13	14	15	16	17+	TOTAL
Exercises:	4	-	8	-	3	1	2	-	1	1	2	-	6	

CHAPTER 13. THE SEQUENCE 1 Bxh7+ Kxh7 2 Qh5+ Kg8 3 Qxf7+

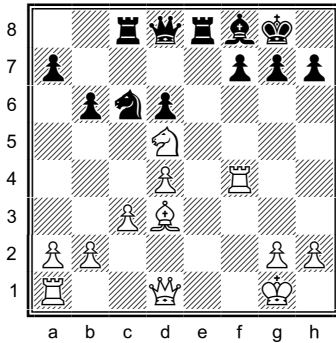


Diagram 1

This chapter contains exercises involving the sequence 1 Bxh7+ Kxh7 2 Qh5+ Kg8 3 Qxf7+, when White has sacrificed a piece for two pawns, but has obtained a dominant Queen on f7 that forces Black's King to the open h-file. In these exercises, Black's pawns on f7 and h7 are usually defended only by Black's King.

In Diagram 1, after the moves 1 Bxh7+ Kxh7 2 Qh5+ Kh8 3 Qxf7+ (see Diagram 2), Black is forced to play 3...Kh7 or 3...Kh8, when 4 Rh4 is mate.

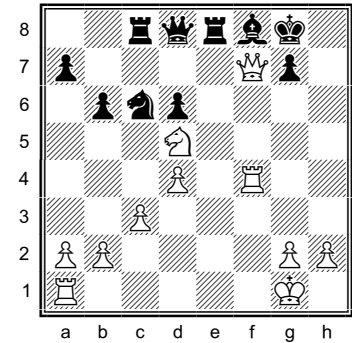


Diagram 2

The following themes are frequently seen in this chapter:

1. White Wins a Piece
2. White Mates Along the h-file
3. With Black's King on h8, White plays Ng6, Mate
4. Black Responds to Rh3 with ...Nh7
5. Black Responds to Rh3 with ...Bh4
6. Black Responds to Rh3 with ...Bh6
7. The Idea of Qg6, Mate
8. The Idea of Qh5, Mate
9. The Idea of Qg7, Mate
10. Miscellaneous Ideas
11. Black Refuses to Take White's Bh7 and Plays 1...Kh8 Instead
12. White Answers 1...Kh8 with 2 Qh5
13. Black Refuses to Take White's Bh7 and Plays 1...Kf8 Instead

These themes are illustrated using eighty-eight preparatory positions, which are followed by thirty-two visualization exercises ranging in depth from seven to twenty-one ply, distributed as follows:

Ply:	5	6	7	8	9	10	11	12	13	14	15	16	17+	TOTAL
Exercises:	-	-	2	-	2	1	2	1	8	-	6	-	10	32

CHAPTER 14. THE SEQUENCE 1 Bxh7+ Kxh7 2 Qxf7

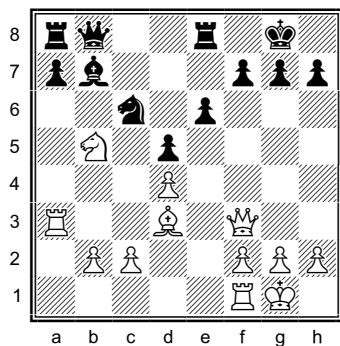


Diagram 1

This chapter contains exercises involving the sequence 1 Bxh7+ Kxh7 2 Qxf7, when White has sacrificed a piece for two pawns, but has obtained a dominant Queen on f7 that opposes Black's King on h7.

In Diagram 1, after the moves 1 Bxh7+ Kxh7 2 Qxf7 (see Diagram 2), White threatens 3 Rh3, mate, when 2...Kh6 loses to 3 Rh3+ Kg5 4 Rh5+ Kg4 with either 5 Qf3, 5 f3, or 5 h3, mate.

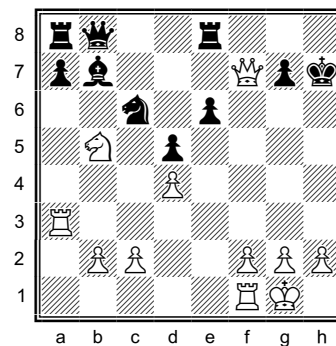


Diagram 2

The following themes are frequently seen in this chapter:

1. Mate Threats Along the h-file
2. Mate Threats Involving g7
3. Mate Threats with a White Pawn on g6
4. Miscellaneous Mates
5. White Wins Material

These themes are illustrated using forty-three preparatory positions, which are followed by sixteen visualization exercises ranging in depth from seven to twenty-seven ply, distributed as follows:

Ply:	5	6	7	8	9	10	11	12	13	14	15	16	17⁺	TOTAL
Exercises:	-	-	2	1	1	-	3	-	2	-	3	-	4	16

CHAPTER 15. THE SEQUENCE 1 R_xh7 K_xh7 2 Q_xf7

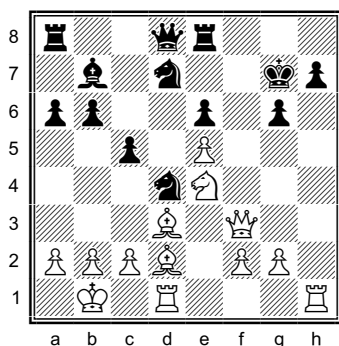


Diagram 1

This chapter contains exercises involving the sequence 1 R_xh7 K_xh7 2 Q_xf7, when White has sacrificed a Rook for a pawn, but has obtained a dominant Queen on f7 that opposes Black's King on h7.

White's Qf3 is under attack in Diagram 1, but after the moves 1 R_xh7+ K_xh7 2 Q_xf7+ (see Diagram 2). Black's has to play 2...K_h8, when White mates in two with 3 R_h1+ Q_h4 4 R_xh4, mate.

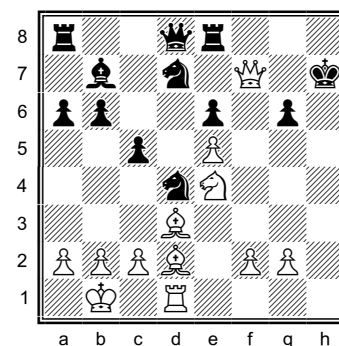


Diagram 2

The following themes are frequently seen in this chapter:

1. The Move R_h1+
2. Black Interposes a Piece or Two on the h-file
3. White Needs an Extra Move to Bring his Rook to the h-file
4. White Covers the Escape Square g5 with a Piece
5. White Covers the Escape Square g5 with a Pawn on f4
6. Black Is Able To Play ...K_g5
7. Quick Mates by Capturing Black's Pawn on g6
8. Attacking g6 with the Move N_f4
9. Miscellaneous Mates

These themes are illustrated using forty-five preparatory positions, which are followed by twenty-eight visualization exercises ranging in depth from nine to twenty-five ply, distributed as follows:

Ply:	5	6	7	8	9	10	11	12	13	14	15	16	17 ⁺	TOTAL
Exercises:	-	-	-	-	8	-	9	-	6	-	1	-	4	28

SECTION 4. THE CLASSIC BISHOP SACRIFICE ON H7

This section contains exercises in which White sacrifices a Bishop on h7 via the sequence 1 Bxh7+ Kxh7 2 Ng5+, when Black typically plays either 2...Kg8 or 2...Kg6. If Black plays 2...Kg8 then White usually follows up with 3 Qh5.

There are three types of positions in which this sacrifice occurs, depending on the status of e7. In Chapters 18 and 19, the square e7 is always occupied by a Black Knight, while in Chapter 20 the square e7 is always occupied by a Black Bishop. In Chapters 16 and 17, the e7 square is either vacant or is occupied by a piece other than a Black Bishop or Knight.

This section contains two sets of chapters that are paired together. Chapters 16 and 17 contain the same source games and feature the same first three moves (1 Bxh7+ Kxh7 2 Ng5+), but Chapter 16 covers the reply 2...Kg8, while Chapter 17 covers the reply 2...Kg6. Chapters 18 and 19 also contain the same source games and feature the same first three moves (1 Bxh7+ Kxh7 2 Ng5+), but Chapter 18 covers the reply 2...Kg8, while Chapter 19 covers the reply 2...Kg6.

The section includes the following five chapters:

CHAPTER 16. THE SEQUENCE 1 BXH7+ KXH7 2 NG5+ KG8 3 QH5

CHAPTER 17. THE SEQUENCE 1 BXH7+ KXH7 2 NG5+ KG6

CHAPTER 18. THE SEQUENCE 1 BXH7+ KXH7 2 NG5+ KG8 3 QH5 (BLACK NE7)

CHAPTER 19. THE SEQUENCE 1 BXH7+ KXH7 2 NG5+ KG6 (BLACK NE7)

CHAPTER 20. THE SEQUENCE 1 BXH7+ KXH7 2 NG5+ (BLACK BE7)

CHAPTER 16, THE SEQUENCE 1 BXH7+ KXH7 2 NG5+ KG8 3 QH5, contains exercises involving the sequence 1 Bxh7 Kxh7 2 Ng5+ Kg8 3 Qh5, when White has sacrificed his Bishop for a pawn on h7, but has obtained an active Queen on h5 and Knight on g5.

CHAPTER 17, THE SEQUENCE 1 BXH7+ KXH7 2 NG5+ KG6, contains exercises involving the sequence 1 Bxh7 Kxh7 2 Ng5+ Kg6, when White has sacrificed his Bishop for a pawn on h7, but Black's King is exposed on g6.

CHAPTER 18, THE SEQUENCE 1 BXH7+ KXH7 2 NG5+ KG8 3 QH5 (BLACK NE7), contains exercises in which Black has a Knight on e7 and involves the sequence 1 Bxh7 Kxh7 2 Ng5+ Kg8 3 Qh5, when White has sacrificed his Bishop for a pawn on h7, but has obtained an active Queen on h5 and Knight on g5.

CHAPTER 19, THE SEQUENCE 1 BXH7+ KXH7 2 NG5+ KG6 (BLACK NE7), contains exercises in which Black has a Knight on e7 and involves the sequence 1 Bxh7+ Kxh7 2 Ng5 Kg6, when White has sacrificed his Bishop for a pawn on h7, but Black's King is exposed on g6.

CHAPTER 20, THE SEQUENCE 1 BXH7+ KXH7 2 NG5+ (BLACK BE7), contains exercises in which Black has a Bishop on e7 and involves the sequence 1 Bxh7 Kxh7 2 Ng5+, when White has sacrificed his Bishop for a pawn on h7, but has obtained an attack on Black's weakened kingside.

CHAPTER 16. THE SEQUENCE 1 Bxh7+ Kxh7 2 Ng5+ Kg8 3 Qh5

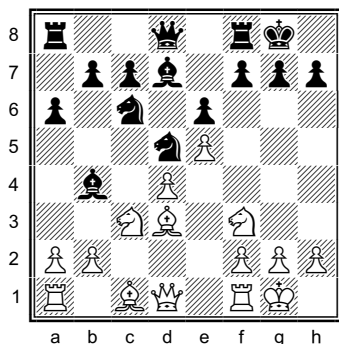


Diagram 1

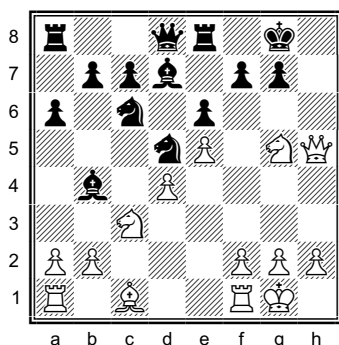


Diagram 3

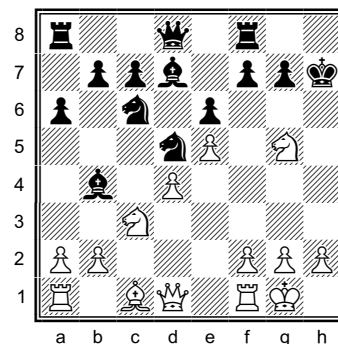


Diagram 2

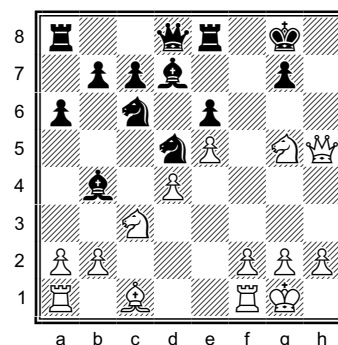


Diagram 4

This chapter contains exercises involving the sequence 1 Bxh7+ Kxh7 2 Ng5+ Kg8 3 Qh5, when White has sacrificed his Bishop for a pawn on h7, but has obtained an active Queen on h5 and Knight on g5.

In Diagram 1, after the moves 1 Bxh7+ Kxh7 2 Ng5+ (see Diagram 2), Black has four legal moves, two to the h-file (2...Kh6 and 2...Kh8) and two to the g-file (2...Kg6 and 2...Kg8). Moving to the h-file loses quickly, e.g., 2...Kh6 drops the Queen to 3 Nxe6 or 3 Nxf7+, while 2...Kh8 loses to 3 Qh5+ Kg8 4 Qh7, mate. So Black has to move to the g-file. 2...Kg8 is covered here in this chapter; 2...Kg6 is covered in the next chapter.

From Diagram 2, after 2...Kg8 3 Qh5, White threatens 4 Qh7, mate, when the only way that Black can prevent mate is with 3...Re8, but this weakens f7 and allows a mate in five moves (see Diagram 3) – 4 Qxf7+ Kh8 5 Qh5+ Kg8 (see Diagram 4) 6 Qh7+ Kf8 7 Qh8+ Ke7 8 Qxg7, mate. This is the main line of the classic Bishop sacrifice and runs 15 ply.

Note that in the original position (see Diagram 1) f7 is solidly defended, but after the moves 2 Ng5, 3 Qh5, and 3...Re8 (see Diagram 3) White has gained a 2-1 advantage on f7 and can play 4 Qxf7+. But if f7 is defended a third time in the original position, for example, by a Black Queen on e7 or a Bishop on e6, then the entire idea behind the sacrifice is unsound, since after 3 Qh5 Re8 White won't be able to play 4 Qxf7+ because f7 will be defended by that extra piece.

The following themes are frequently seen in this chapter:

1. Black Plays ...Re8
2. Black Plays ...Rd8
3. Black Plays ...Rc8
4. Miscellaneous Mates
5. Black Defends h7 with ...Nf6
6. Black Defends h7 with ...Bf5 or Be4
7. Black Defends h7 with ...Qd3
8. Black Defends h7 with ...Nf8
9. Black Plays ...Qxg5

These themes are illustrated using forty preparatory positions, which are followed by thirty-two visualization exercises ranging in depth from seven to eighteen ply, distributed as follows:

Ply:	5	6	7	8	9	10	11	12	13	14	15	16	17+	TOTAL
Exercises:	-	-	1	3	3	1	4	1	3	5	6	1	4	32

CHAPTER 17. THE SEQUENCE 1 Bxh7+ Kxh7 2 Ng5+ Kg6

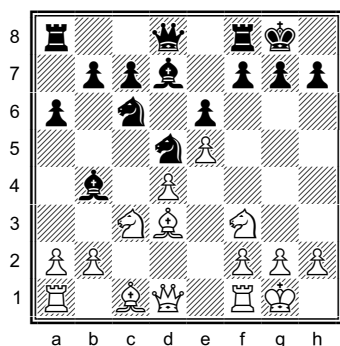


Diagram 1

This chapter contains exercises involving the sequence 1 Bxh7+ Kxh7 2 Ng5+ Kg6, when White has sacrificed his Bishop for a pawn on h7, but has a target in Black's exposed King on g6.

In Diagram 1, after the moves 1 Bxh7+ Kxh7 2 Ng5+ Kg6 (see Diagram 2), White can continue the attack by either checking along the b1-h7 diagonal with 3 Qc2+ or Qd3+, playing 3 Qg4 (threatening to win Black's Queen with either 4 Nxe6 or Nxf7+), or playing 3 h4 with the threat of playing 5 h5+.

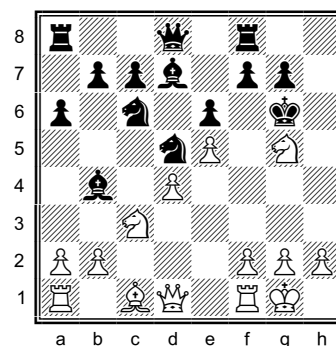


Diagram 2

Each of these ideas is illustrated in the preparatory positions below (see items 6 through 9).

The following themes are frequently seen in this chapter:

1. Tactics Involving the Move Qxa8
2. Tactics Involving the Move Nd5
3. Black Plays ...Kh6
4. Black Plays ...Kh5
5. Mating on e6
6. Ideas after Qc2+/Qd3+/Qe4+
7. Ideas after Qg4
8. Ideas after h4-h5+
9. Other Ideas Involving the Move h4
10. Miscellaneous

These themes are illustrated using one hundred ten preparatory positions, which are followed by thirty-two visualization exercises ranging in depth from nine to twenty-five ply, distributed as follows:

Ply:	5	6	7	8	9	10	11	12	13	14	15	16	17+	TOTAL
Exercises:	-	-	-	-	3	1	4	6	4	-	5	1	8	32

CHAPTER 18. THE SEQUENCE 1 Bxh7+ Kxh7 2 Ng5+ Kg8 3 Qh5 (BLACK NE7)

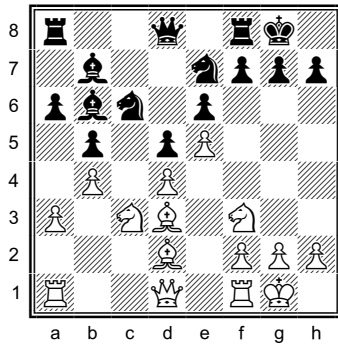


Diagram 1

This chapter contains exercises involving the sequence (see Diagram 1) 1 Bxh7+ Kxh7 2 Ng5+ Kg8 3 Qh5 when Black has a Knight on e7. White has sacrificed a Bishop for a pawn, but has obtained an active Queen on h5 and Knight on g5 (see Diagram 2) and threatens 4 Qh7, mate.

Black can avoid mate with 3...Re8, creating an escape square on f8 for his King, but White now wins with 4 Qxf7+ Kh8 5 Nxe6, threatening both 6 Nxd8 and 6 Qxg7, mate.

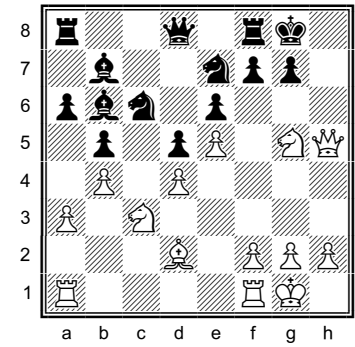


Diagram 2

The following themes are frequently seen in this chapter:

1. Miscellaneous Mates
2. White Plays Qxf7 and Nxe6
3. White Plays Qxf7+ and Rh3/Rh4+
4. White Plays Qh7+
5. White Plays Qh7+ and Bg5
6. Black Plays 2...Kh6
7. Black Plays 2...Kh8

These themes are illustrated using fifty-eight preparatory positions, which are followed by twenty-eight visualization exercises ranging in depth from nine to twenty-one ply, distributed as follows:

Ply:	5	6	7	8	9	10	11	12	13	14	15	16	17+	TOTAL
Exercises:	-	-	-	-	1	-	6	1	1	-	9	-	10	

CHAPTER 19. THE SEQUENCE 1 Bxh7+ Kxh7 2 Ng5+ Kg6 (BLACK NE7)

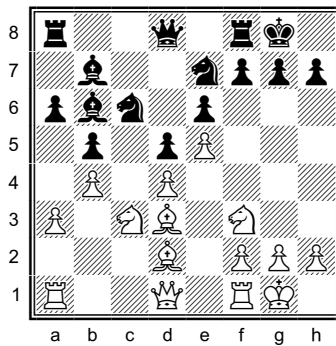


Diagram 1

This chapter contains exercises involving the sequence 1 Bxh7+ Kxh7 2 Ng5+ Kg6 when Black has a Knight on e7. White has sacrificed a Bishop for a pawn, but has a target in Black's exposed King on g6.

In Diagram 1, after the moves 1 Bxh7+ Kxh7 2 Ng5 Kg6, White has three ways to continue the attack – checking along the b1-h7 diagonal with either 3 Qc2+ or Qd3+, playing 3 Qg4, or playing 3 h4.

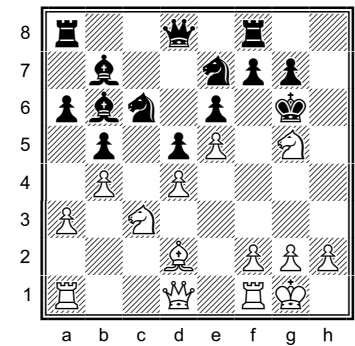


Diagram 2

In Diagram 2 the move 3 Qg4 is the most effective. White is threatening to win Black's Queen with 4 Nxe6+. If Black plays 3...Kh6, then White mates in two with 4 Nxe6+ Kh7 5 Qxg7, mate, and if 3...f5 then 4 exf6 wins, e.g., 4...gxf6 or 4...Rxf6 both drop the Queen to 5 Nxe6+, while 4...Kxf6 allows 5 Qxe6, mate. Black can also play 4...Qd7, defending f6 and getting the Queen out of the way of the discovered check, but now the weakness on g7 comes into play after 3 Nh7+, e.g., 3...Kxh7 Qxg7, mate, or 3...Kf7 4 Qxg7+ Ke8 5 Qxf8, mate.

The following themes are frequently seen in this chapter:

1. White Plays Qc2+ or Qd3+
2. White Plays Qg4
3. White Plays Qg3
4. White Plays Qh3/Qh4/Qh5
5. White Plays h4-h5
6. Black Plays ...Kh6 orKh5
7. Miscellaneous Mates

These themes are illustrated using ninety preparatory positions, which are followed by twenty eight visualization exercises ranging in depth from seven to twenty-one ply, distributed as follows:

Ply:	5	6	7	8	9	10	11	12	13	14	15	16	17+	TOTAL
Exercises:	-	-	1	-	2	-	-	5	7	-	3	-	10	28

CHAPTER 20. THE SEQUENCE 1 Bxh7+ Kxh7 2 Ng5+ (BLACK BE7)

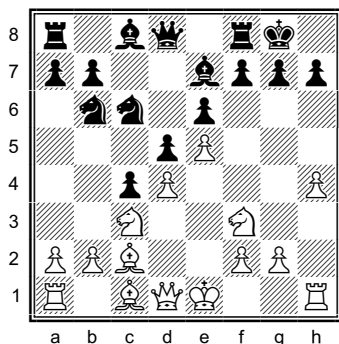


Diagram 1

This chapter contains exercises involving the sequence 1 Bxh7+ Kxh7 2 Ng5+ when Black has a Bishop on e7. White has sacrificed a Bishop for a pawn, but has a strong attack against Black's exposed King on h7.

In Diagram 1, after the moves 1 Bxh7+ Kxh7 2 Ng5+ (see Diagram 2), Black has five legal moves, but three of them lose immediately -- 2...Kh6 drops the Queen to 3 Nx6 or Nxf7+; 2...Kh8 loses to 3 Qh5+ Kg8 4 Qh7, mate; and 2...Kg6 3 h5+ Kf5 4 g4 is mate. Thus Black has two main choices in Diagram 2, 2...Kg8 and 2...Bxg5.

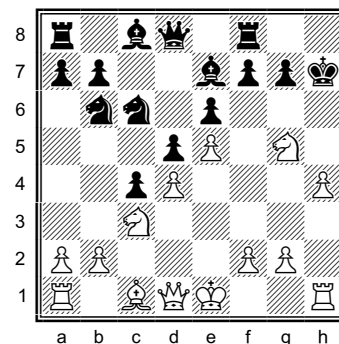


Diagram 2

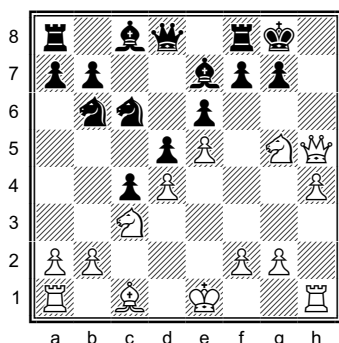


Diagram 3

In Diagram 2, after 2...Kg8 3 Qh5 (see Diagram 3), White threatens 4 Qh7, mate, when 3...Re8 loses to 4 Qh7+ Kf8 5 Qh8, mate, and 3...Bxg5 4 hxg5 threatens both 5 Qh7 and 5 Qh8, mate. If Black creates an escape square on f7 with either 4...f6 or 4...f5, but then 5 g6 closes off that escape square, when Black can no longer prevent 6 Qh8, mate.

In Diagram 2, after 2...Bxg5 3 hxg5+ (see Diagram 4), 3...Kg6 loses to 4 Qh5+ Kf5 5 g4, mate, while

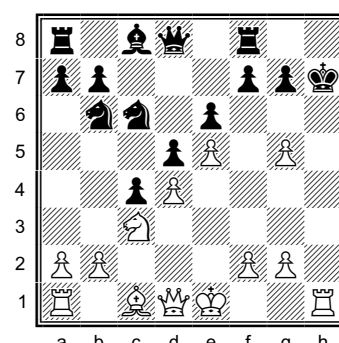


Diagram 4

3...Kg8 4 Qh5 threatens both 5 Qh7 and 5 Qh8, mate, and if Black creates an escape square on f7 with either 4...f6 or 4...f5, then 5 g6 closes off that escape square, when Black can no longer prevent 6 Qh8, mate.

Note that after 1 Bxh7+ Kxh7 2 Ng5+ (see Diagram 2), the moves 2...Kg8 and 2...Bxg5 will transpose after the following sequences:

2...Kg8 3 Qh5 Bxg5 4 hxg5+;
2...Bxg5 3 hxg5+ Kg8 4 Qh5.

In both cases White threatens Qh7/Qh8, mate, when 4...f5/f6 loses to 5 g6 with 6 Qh8, mate.

The following themes are frequently seen in this chapter:

1. Black Plays ...Bxg5 and ...Kg8
2. Black Plays ...Kg8 (without ...Bxg5)
3. Black Plays ...Bxg5 and ...Kg6
4. Black Plays ...Kg6 (without ...Bxg5)
5. Black Plays ...Kh6
6. Miscellaneous
7. Black Refuses to Take White's Bh7

These themes are illustrated using forty preparatory positions, which are followed by sixteen visualization exercises ranging in depth from seven to twenty-one ply, distributed as follows:

Ply:	5	6	7	8	9	10	11	12	13	14	15	16	17+	TOTAL
Exercises:	-	-	1	-	1	-	8	1	1	-	1	-	3	16

SECTION 5. SACRIFICES ON THE DARK SQUARES (F6, G7, AND H6)

This section contains exercises in which White sacrifices a piece on one of the dark squares in front of Black's castled King -- f6, g7, or h6. The first three chapters involve a Rook sacrifice on g7; the next three chapters involve the sacrifice of a Bishop or Knight on h6; while the last two chapters involve a sacrifice on f6, as follows:

CHAPTER 21. THE SEQUENCE 1 RXG7+ KXG7 2 QG5+

CHAPTER 22. THE SEQUENCE 1 RXG7+ KXG7 2 RG1+

CHAPTER 23. THE SEQUENCE 1 RXG7+ KXG7 2 MISCELLANEOUS

CHAPTER 24. THE SEQUENCE 1 BXH6 GXH6 2 QXH6

CHAPTER 25. THE SEQUENCE 1 BXH6 GXH6 2 QG6+ KH8 3 QXH6+

CHAPTER 26. WHITE PLAYS 1 NH6+

CHAPTER 27. WHITE PLAYS 1 NF6+

CHAPTER 28. WHITE PLAYS 1 RXN(F6)

CHAPTER 21, THE SEQUENCE 1 RXG7+ KXG7 2 QG5+, contains exercises involving the sequence 1 R_xg7+ K_xg7 2 Qg5+ (or some other Queen move), when White has sacrificed a Rook for a pawn, but has obtained a dominant Queen and has weakened the squares around Black's King.

CHAPTER 22, THE SEQUENCE 1 RXG7+ KXG7 2 RG1+, contains exercises involving the sequence 1 R_xg7+ K_xg7 2 Rg1+ (or some other Rook check along the g-file), when White has sacrificed a Rook for a pawn, but has occupied the g-file with tempo and has weakened the squares around Black's King.

CHAPTER 23, THE SEQUENCE 1 RXG7+ KXG7 2 MISCELLANEOUS, contains exercises involving the sequence 1 R_xg7+ K_xg7 followed by a move other than an immediate check along the g-file, when White has sacrificed a Rook for a pawn, but has opened the g-file and has weakened the squares around Black's King.

CHAPTER 24, THE SEQUENCE 1 BXH6 GXH6 2 QXH6, contains exercises involving the sequence 1 B_xh6 g_xh6 2 Q_xh6, when White has sacrificed a piece for two pawns, but has opened up the g-file, weakened the squares around Black's King, and obtained a dominant Queen on h6.

CHAPTER 25, THE SEQUENCE 1 BXH6 GXH6 2 QG6+ KH8 3 QXH6+, contains exercises involving the sequence 1 B_xh6 g_xh6 2 Qg6+ K_h8 3 Q_xh6+, when White has sacrificed a piece for two pawns, but has opened up the g-file, weakened the squares around Black's King, and obtained a dominant Queen on h6.

CHAPTER 26, WHITE PLAYS 1 NH6+, contains exercises in which White plays the move 1 N_h6+, when capturing the Knight with 1...g_xh6 opens up the g-file and weakens the squares around Black's King, while playing 1...K_h8 allows 2 N_xf7+, often forking Black's K_h8 and Q_d8.

CHAPTER 27, WHITE PLAYS 1 NF6+, contains exercises in which White plays the move 1 N_f6+, when capturing the Knight with 1...g_xh6 opens up the g-file and weakens the squares around Black's King, while playing 1...K_h8 gives White a strong Knight on f6, with pressure on the light squares.

CHAPTER 28, WHITE PLAYS 1 RXN(F6), contains exercises in which White plays 1 R_xN(f6), when 1...g_xf6 opens the g-file and weakens the squares around Black's King, while 1...B_xf6 weakens the square h7.

CHAPTER 21. THE SEQUENCE 1 R_xg7+ K_xg7 2 Qg5+

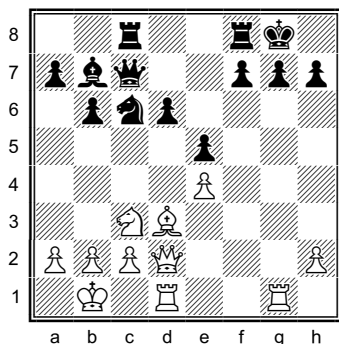


Diagram 1

This chapter contains exercises involving the sequence 1 R_xg7+ K_xg7 2 Qg5+ (or some other Queen move), when White has sacrificed a Rook for a pawn, but has obtained a dominant Queen and has weakened the squares around Black's King.

In Diagram 1, after the moves 1 R_xg7+ K_xg7 2 Qg5+ Kh8 (see Diagram 2), White mates in two with 3 Qf6+ Kg8 4 Rg1, mate. Note that declining the sacrifice with 1...Kg8 loses to 2 Qh6, when Black can't stop 3 Qxh7, mate.

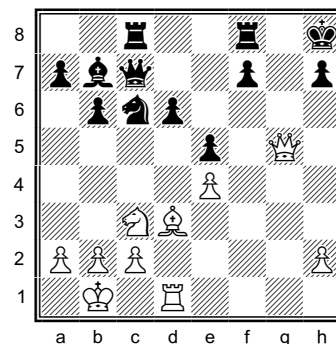


Diagram 2

The following themes are frequently seen in this chapter:

1. White Attacks Black's Kg7 with Qh6+
2. White Attacks Black's Kg7 with Qg6+
3. White Attacks Black's Kg7 with Qf6+
4. White Attacks Black's Kg7 with Qg5+
5. Black Interposes a Piece on the g-file
6. White Wins Back His Rook
7. Winning Black's Queen with a Discovered Check
8. Attacking Black's Kh8 with a Queen and Knight
9. Attacking Black's Kh8 with a Queen and Rook on the g-file
10. Attacking Black's Kh6
11. Attacking Black's Kg7
12. Attacking Black's Kf8
13. Attacking Black's Kf6
14. Black Refuses to Take White's Rg7 and Plays 1...Kf8
15. Black Refuses to Take White's Rg7 and Plays 1...Kh8
16. Miscellaneous

These themes are illustrated using sixty-seven preparatory positions, which are followed by thirty-six visualization exercises ranging in depth from five to fifteen ply, distributed as follows:

Ply:	5	6	7	8	9	10	11	12	13	14	15	16	17+	TOTAL
Exercises:	2	-	8	2	10	-	8	2	3	-	1	-	-	36

CHAPTER 22. THE SEQUENCE 1 R_{xg7}+ K_{xg7} 2 R_{g1}+

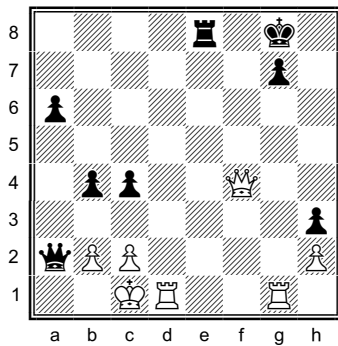


Diagram 1

This chapter contains exercises involving the sequence 1 R_{xg7}+ K_{xg7} 2 R_{g1}+ (or some other Rook check along the g-file), when White has sacrificed a Rook for a pawn, but has occupied the g-file with tempo and has weakened the squares around Black's King.

In Diagram 1, after the moves 1 R_{xg7}+ K_{xg7} 2 R_{g1}+ (see Diagram 2), both 2...K_{h7} and 2...K_{h8} lose to 3 Q_{h4}, mate. Note that declining the sacrifice with 1...K_{h8} loses to 2 Q_{h6}, mate.

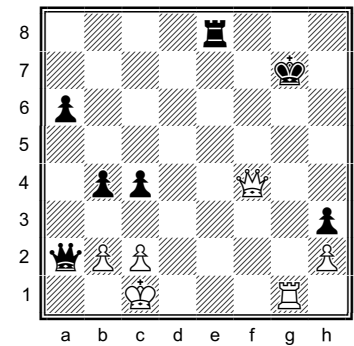


Diagram 2

The following themes are frequently seen in this chapter:

1. Black's King is on K_{h8}
2. Black's King is on K_{h8} with a Rook on g₈
3. Black's King is on K_{h7}
4. Black's King is on K_{h6}
5. Black's King is on K_{f8}
6. Black's King is on K_{f7}
7. Black's King is on K_{f6}
8. Black Interposes a Piece Along the g-file

These themes are illustrated using ninety-one preparatory positions, which are followed by thirty-two visualization exercises ranging in depth from five to seventeen ply, distributed as follows:

Ply:	5	6	7	8	9	10	11	12	13	14	15	16	17 ⁺	TOTAL
Exercises:	3	-	5	-	9	1	4	-	6	-	2	-	2	32

CHAPTER 23. THE SEQUENCE 1 R×g7+ K×g7 2 MISCELLANEOUS

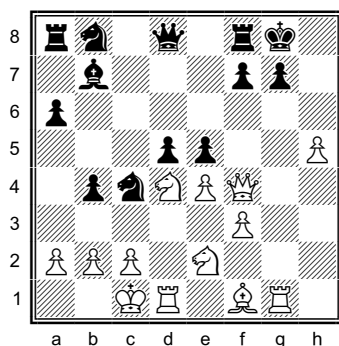


Diagram 1

This chapter contains exercises involving the sequence 1 R×g7+ K×g7 followed by a move other than an immediate check along the g-file, when White has sacrificed a Rook for a pawn, but has opened the g-file and has weakened the squares around Black's King.

In Diagram 1, after the moves 1 R×g7 K×g7, White wins with 2 Nf5+ (see Diagram 2), with a forced mate in all variations, e.g., 2...Kf6 3 Qh6, mate; 2...Kg8 3 Qg4+ with Qg7, mate; or 2...Kh7 3 Qh6+ Kg8 4 Qg7, mate.

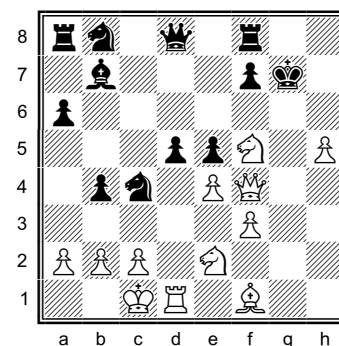


Diagram 2

The following themes are frequently seen in this chapter:

1. Winning with a Discovered Check
2. Mating Black's King on f6
3. Mating Black's King on h6
4. Winning with a Pawn on f6
5. Winning with a Knight on f5
6. Winning with a Bishop on h6
7. Winning with a Bishop on h6 and a Queen on h5
8. Black Refuses to Take White's Rg7

These themes are illustrated using thirty-six preparatory positions, which are followed by twenty visualization exercises ranging in depth from five to fifteen ply, distributed as follows:

Ply:	5	6	7	8	9	10	11	12	13	14	15	16	17 ⁺	TOTAL
Exercises:	4	2	3	-	2	1	4	-	3	-	1	-	-	20

CHAPTER 24. THE SEQUENCE 1 Bxh6 gxh6 2 Qxh6

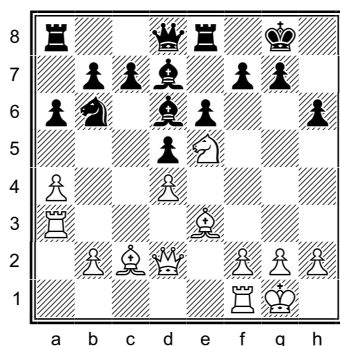


Diagram 1

This chapter contains exercises involving the sequence 1 Bxh6 gxh6 2 Qxh6, when White has sacrificed a piece for two pawns, but has opened up the g-file, weakened the squares around Black's King, and obtained a dominant Queen on h6.

In Diagram 1, after the moves 1 Bxh6 gxh6 2 Qxh6 (see Diagram 2), White threatens mate with either

- a) 3 Rg3+ Qg5 2 Rxf7, mate;
- b) 3 Qh7+ Kf8 2 Qxf7, mate; or
- c) 3 Bh7+ Kh8 2 Nxf7, mate.

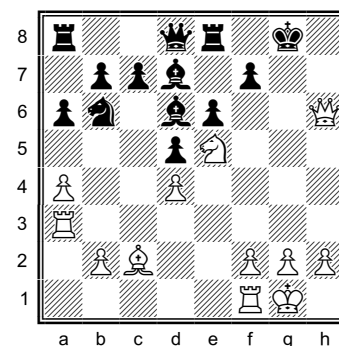


Diagram 2

The following themes are frequently seen in this chapter:

1. Winning Black's Queen with a Discovered Check
2. Winning Black's Queen with Nxf6
3. Queen-Knight Mate on g7
4. Queen-Knight Mate on f7
5. Queen-Bishop Mate on h7
6. Queen-Bishop Mate on h7 (Mate in Five Moves)
7. Queen-Bishop-Knight Mate
8. Rook Lifts to the h-file
9. Rook Lifts to the g-file
10. Miscellaneous Rook Lifts
11. Black Plays ...f5
12. Miscellaneous Mates
13. Defends

These themes are illustrated using seventy-five preparatory positions, which are followed by thirty-six visualization exercises ranging in depth from five to eighteen ply, distributed as follows:

Ply:	5	6	7	8	9	10	11	12	13	14	15	16	17+	TOTAL
Exercises:	2	-	4	-	6	2	8	-	6	2	4	-	2	36

CHAPTER 25. THE SEQUENCE 1 Bxh6 gxh6 2 Qg6+ Kh8 3 Qxh6+

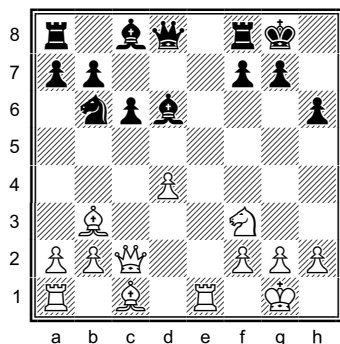


Diagram 1

This chapter contains exercises involving the sequence 1 Bxh6 gxh6 2 Qg6+ Kh8 3 Qxh6+, when White has sacrificed a piece for two pawns, but has opened up the g-file, weakened the squares around Black's King, and obtained a dominant Queen on h6.

In Diagram 1, after the moves 1 Bxh6 gxh6 2 Qg6+ Kh8 3 Qxh6+ Kg6 (see Diagram 2), White can play either 4 Ng5, threatening 5 Qh7, mate or 4 Re4, threatening 5 Qg6+ Kh8 6 Rh4, mate.

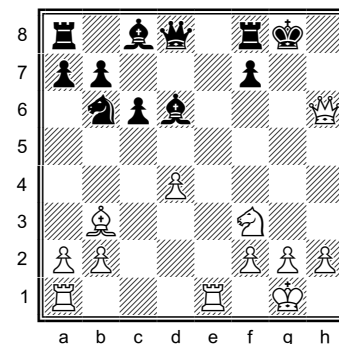


Diagram 2

The following themes are frequently seen in this chapter:

1. White Brings the Nf3 into the Attack
2. White Brings a Rook into the Attack
3. Black Counters with a Skewer Trick
4. White Brings the Light-Squared Bishop into the Attack
5. Black Counters with ...f5
6. White Brings the Nc3 into the Attack
7. Black Interposes on g7
8. Black Refuses to Take White's Bh6
9. Miscellaneous Mates and Tactics

These themes are illustrated using forty-six preparatory positions, which are followed by twenty-eight visualization exercises ranging in depth from five to twenty-three ply, distributed as follows:

Ply:	5	6	7	8	9	10	11	12	13	14	15	16	17⁺	TOTAL
Exercises:	-	-	1	-	3	-	6	2	3	-	5	-	8	28

CHAPTER 26. WHITE PLAYS 1 Nh6+

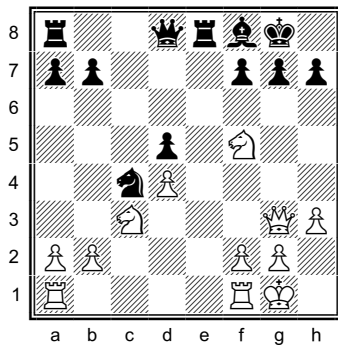


Diagram 1

This chapter contains exercises in which White plays the move 1 Nh6+, when 1...gxh6 opens the g-file and weakens the squares around Black's King, while playing 1...Kh8 allows 2 Nxf7+, often forking Black's Kh8 and Qd8.

In Diagram 1, after the moves 1 Nh6+ Kh8, White wins Black's Queen with 2 Nxf7+. In Diagram 2, after the moves 1 Nh6+ Kh8 2 Nxf7+, White again wins Black's Queen, while after 1...gxh6 2 Qxf6, White threatens mate with either 3 Qh8, 3 Qxf7, or 3 Bxf7, mate.

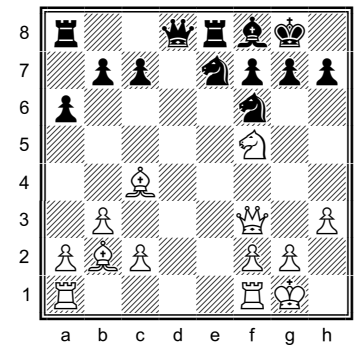


Diagram 2

The following themes are frequently seen in this chapter:

1. White Plays Nxf7, Winning Black's Queen or Rook on d8
2. Discovered Attacks
3. Mate on g8 and Smothered Mates
4. White's Knight on f7 Supports a Mate on h8
5. The Idea of Qg7, Mate
6. Mating with a Queen and Two Bishops
7. Queen Sacrifices
8. The Move Qg6+
9. Miscellaneous Tactics
10. Miscellaneous Mates
11. King Hunts

These themes are illustrated using eighty preparatory positions, which are followed by forty visualization exercises ranging in depth from five to twenty-three ply, distributed as follows:

Ply:	5	6	7	8	9	10	11	12	13	14	15	16	17+	TOTAL
Exercises:	8	2	7	-	7	-	3	-	3	-	2	-	8	40

CHAPTER 27. WHITE PLAYS 1 Nf6+

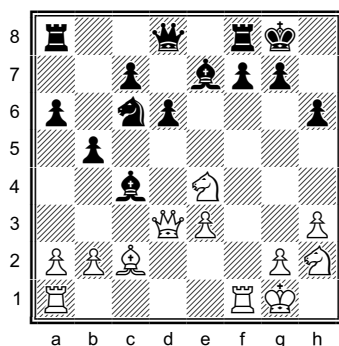


Diagram 1

This chapter contains exercises in which White plays the move 1 Nf6+, when capturing the Knight with 1...gxh6 opens up the g-file and weakens the squares around Black's King, while playing 1...Kh8 gives White a strong Knight on f6, with pressure on the light squares.

In Diagram 1, Black's Bc4 is skewering White's Qd3 and Rf1, but White wins with 1 Nf6+, when Black can't stop 2 Qxh7, mate, e.g., if Black plays 1...gxf6 or 1...Bxf6, then 2 Qh7 is mate, while if Black plays 1...Kh8, then 2 Qh7 is also mate.

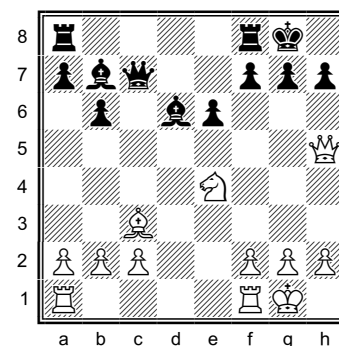


Diagram 2

In Diagram 2, after 1 Nf6+ Black can't play 1...Kh8 because of 2 Qxh7, mate, and if Black takes the Knight with 1...gxf6, then White wins with 2 Qg4+ Kh8 3 Bxf6, mate.

The following themes are frequently seen in this chapter:

1. The Move Qg7, Mate
2. The Move Bxf6, Mate
3. The Move Qxh7, Mate
4. The Move Ng5+
5. Mates Involving a White Bishop on the a2-g8 Diagonal
6. Mates Involving a White Rook
7. Miscellaneous Mates
8. Miscellaneous Tactics and Longer Variations
9. Black Refuses to Take the Nf6 – White Plays Nh5
10. Black Refuses to Take the Nf6 – White Plays Bxh6
11. Black Refuses to Take the Nf6 – Miscellaneous

These themes are illustrated using seventy-six preparatory positions, which are followed by forty-four visualization exercises ranging in depth from three to twenty-five ply, distributed as follows:

Ply:	5	6	7	8	9	10	11	12	13	14	15	16	17+	TOTAL
Exercises:	14*	-	8	-	8	-	6	-	3	-	-	-	5	44

*Six of these fourteen exercises are 3-ply.

CHAPTER 28. WHITE PLAYS 1 RxN(f6)

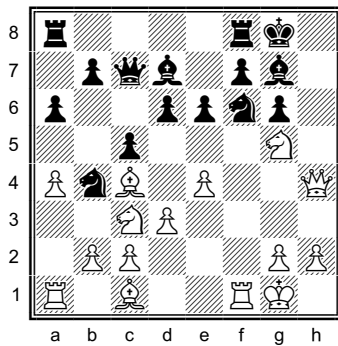


Diagram 1

This chapter contains exercises in which White plays 1 RxN(f6), when 1...gxf6 opens the g-file and weakens the squares around Black's King, while 1...Bxf6 weakens the square h7.

In Diagram 1, after 1 Rxf6 Black can't play 1...Bxf6 because of 2 Qh7, mate, and if 1...Re8, then White wins with 2 Rxf7, when Black can't prevent 3 Qh7+, mate.

In Diagram 2, White has already played Rxf6 and now wins with either 1 Nf5 or 1 Nh5, when Black can't stop 2 Qg7, mate.

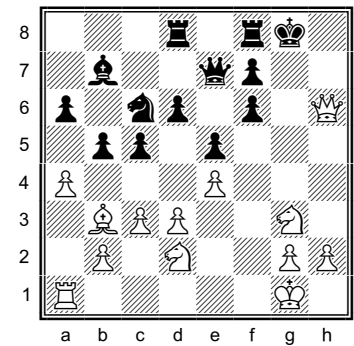


Diagram 2

The following themes are frequently seen in this chapter:

1. Mate on h7 – White's Queen is Supported by a Bishop on the b1-h7 Diagonal
2. Mate on h7 – White's Queen is Supported by a Knight on f6
3. Black's King Escapes to f8 – Miscellaneous
4. Black's King Escapes to f8 – White Wins Black's Queen with Ne6+ or Nd7+
5. Black's King Escapes to f8 – Queen and Bishop Mate on f7
6. Mate on g7 – White's Queen is Supported by a Bishop on h6
7. Mate on g7 – White's Queen is Supported by a Knight on h5
8. Mate on g7 – White's Queen is Supported by a Knight on f5
9. Black's King Escapes to f8
10. The Formation Qh5, Ng6, and Bd3
11. Attacking Black's Fianchetto with Bh6
12. Attacking Black's Fianchetto with Nd5
13. Miscellaneous Mates Involving a Queen and Bishop
14. Miscellaneous Mates Involving a Queen and Rook
15. Black Refuses to Take the Rf6

These themes are illustrated using seventy-six preparatory positions, which are followed by forty-four visualization exercises ranging in depth from five to twenty-one ply, distributed as follows:

Ply:	5	6	7	8	9	10	11	12	13	14	15	16	17⁺	TOTAL
Exercises:	1	-	9	-	10	2	6	-	2	1	5	-	8	44