

BOOK 1

COURSE

GENERAL TACTICS

Ian Anderson

Foreword by FIDE Master Paul Whitehead

CHESS VISUALIZATION COURSE

BOOK 1: GENERAL TACTICS

© Copyright 2007 by Gelvert Publishing LLC

All rights reserved. No part of this work may be reproduced or transmitted in any form or by any means, electronic or mechanical, including photocopying and recording, or by any information storage or retrieval system, except for brief passages used in a review.

Library of Congress Control Number: 2007927520.

ISBN 978-0-9795940-2-1

ISBN 0-9795940-2-2

Published by:

Gelvert Publishing LLC
P.O. Box 4484
Charlottesville VA 22905-4484

Cover design by Georgia Pearson.

Edited by Ginny Kanter (gkanter@cstone.net).

Chess fonts designed by Eric Bentzen (bentzen@enpassant.dk);
see the Chess Alpha fonts at <http://www.enpassant.dk>. Used with permission.

Most of the analysis in this book was checked using Crafty, a chess analysis program written by Dr. Robert Hyatt, available either in ChessBase 7.0 (www.chessbase.com or www.chessbaseusa.com) or as a freeware package downloadable at <ftp.cis.uab.edu/pub/hyatt>.

Please visit our website at www.chessvisualization.com to see other *Chess Visualization Course* products and services.

TABLE OF CONTENTS

PLY TABLE	4
FOREWORD	7
INTRODUCTION	9
Description of the Sections and Chapters	9
How To Use This Book	10
Ply Depth Barriers	11
SECTION 1. SERIES OF EXCHANGES ON A SINGLE SQUARE	13
Chapter 1. Even Exchanges	15
Chapter 2. Exchanges Involving an Extra Attacker.....	21
Chapter 3. Exchanges Involving Pieces of Different Value	27
Chapter 4. Exchanges After Penetration.....	35
Chapter 5. Exchanges Involving a Passed Pawn	41
SECTION 2. BEFORE AND AFTER	51
Chapter 6. Preparatory Build-Up.....	53
Chapter 7. After Effects	63
Chapter 8. Exchanging to a Won Ending	73
Chapter 9. Before and After.....	83
SECTION 3. TWO SECTORS OF THE BOARD	91
Chapter 10. Two Sectors of the Board (White To Play).....	93
Chapter 11. Two Sectors of the Board (Black To Play)	103
Chapter 12. Multiple Imbalances.....	113
Chapter 13. Expanding the Position	123
SECTION 4. QUEENS UNDER ATTACK	133
Chapter 14. First Player To Attack the Queen.....	135
Chapter 15. Second Player To Attack the Queen	145
Chapter 16. Desperado Queens.....	153
Chapter 17. Double Desperados	161
Chapter 18. Pins to the Queen	167
SECTION 5. RABID PIECES AND PAWNS	175
Chapter 19. Rabid Knights	177
Chapter 20. Rabid Bishops	187
Chapter 21. Rabid Pawns.....	197
Chapter 22. Rabid Passed Pawns.....	205
SECTION 6. THREE SECTORS OF THE BOARD	215
Chapter 23. Three Sectors of the Board (White to Play)	217
Chapter 24. Three Sectors of the Board (Black to Play).....	227
Chapter 25. Seeing Further	235
Chapter 26. Longer Variations	245
ANSWER KEY	257
APPENDIX 1. INDEX OF ECO CODES	323

PLY TABLE

The following table shows the number exercises in this book at each ply for each chapter. The first column shows the chapter titles; the last column shows the total number of exercises in each chapter; and the top row show the lengths of the variations of the exercises, ranging from four to twelve and more half-moves (ply). A half-move is one move made by either White or Black; a variation that is four half-moves long (four ply) contains two moves by White and two moves by Black.

LENGTH (HALF-MOVES):	4	5	6	7	8	9	10	11	12+	TOTAL
SECTION 1. SERIES OF EXCHANGES ON A SINGLE SQUARE										
1. EVEN EXCHANGES	2	-	8	-	8	-	2	-	-	20
2. AN EXTRA ATTACKER	-	4	-	12	-	4	-	-	-	20
3. PIECES OF DIFFERENT VALUE	2	12	12	2	-	-	-	-	-	28
4. AFTER PENETRATION	-	8	4	4	4	-	-	-	-	20
5. INVOLVING A PASSED PAWN	12	12	7	1	-	-	-	-	-	32
SECTION 2. SERIES OF EXCHANGES – BEFORE AND AFTER										
6. PREPARATORY BUILD-UP	-	-	-	8	4	8	2	4	10	36
7. AFTER EFFECTS	-	2	-	6	4	16	2	2	4	36
8. EXCHANGING TO A WON ENDING	-	-	-	4	-	4	-	4	24	36
9. BEFORE AND AFTER	-	-	-	-	-	10	-	10	4	24
SECTION 3. TWO SECTORS OF THE BOARD										
10. TWO SECTORS (WHITE)	-	4	4	12	4	6	2	4	-	36
11. TWO SECTORS (BLACK)	-	8	-	8	8	6	2	4	-	36
12. MULTIPLE IMBALANCES	-	8	2	8	8	8	2	-	-	36
13. EXPANDING THE POSITION	-	-	-	8	-	14	2	8	-	32
SECTION 4. QUEENS UNDER ATTACK										
14. FIRST PLAYER TO ATTACK	-	4	2	12	2	6	1	5	-	32
15. SECOND PLAYER TO ATTACK	-	2	2	10	2	6	2	4	-	28
16. DESPERADO QUEENS	-	4	6	8	4	4	-	2	-	28
17. DOUBLE DESPERADOS	-	4	2	6	2	4	-	2	-	20
18. PINS TO THE QUEEN	-	8	-	6	2	8	2	2	-	28
SECTION 5. RABID PIECES AND PAWNS										
19. RABID KNIGHTS	-	-	2	4	10	6	8	6	-	36
20. RABID BISHOPS	-	2	4	10	4	6	2	4	-	32
21. RABID PAWNS	-	-	4	8	6	6	2	2	-	28
22. RABID PASSED PAWNS	-	2	6	6	4	12	4	2	-	36
SECTION 6. THREE SECTORS OF THE BOARD										
23. THREE SECTORS (WHITE)	-	4	-	8	6	10	3	5	-	36
24. THREE SECTORS (BLACK)	-	4	-	11	1	6	3	3	-	28
25. SEEING FURTHER	-	-	-	3	-	6	1	10	12	32
26. LONGER VARIATIONS	-	-	-	-	-	-	-	-	44	44
TOTALS FOR EACH PLY:										
	16	92	65	165	83	156	42	83	98	800

INTRODUCTION

The *Chess Visualization Course, Book 1: General Tactics* is intended for players rated between 1200 and 1800 USCF (50 to 150 BCF) who want to improve their chess visualization skills using exercises taken from real games, many played by international masters and grandmasters in tournaments located throughout the world. This 328-page book contains 800 exercises arranged in twenty-six chapters, each of which illustrates a particular theme. The exercises within each chapter are arranged by the length of the variations that you are asked to visualize. Each chapter contains between twenty and forty-four exercises.

This 20-page sample booklet contains 24 of the 800 exercises in the book and covers six of the twenty-six chapters found in the book. For each of the six chapters we have included the full introduction as it appears in the full-length book, plus four sample exercises for each of the six chapters, along with an answer key. We have also included the table of contents and the ply table as they appear in the book. Although smaller in size, this sample booklet has the same look and feel as the full-length book that is offered for sale.

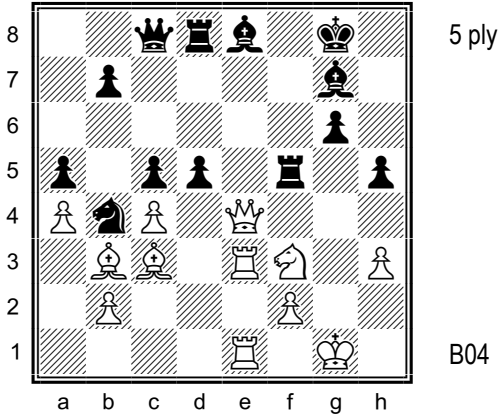
The following are the six chapters covered in this booklet:

Chapter 3. Exchanges Involving Pieces of Different Value	6
Chapter 8. Exchanging to a Won Ending	8
Chapter 13. Expanding the Position	10
Chapter 16. Desperado Queens.....	12
Chapter 22. Rabid Passed Pawns.....	14
Chapter 25. Seeing Further	16

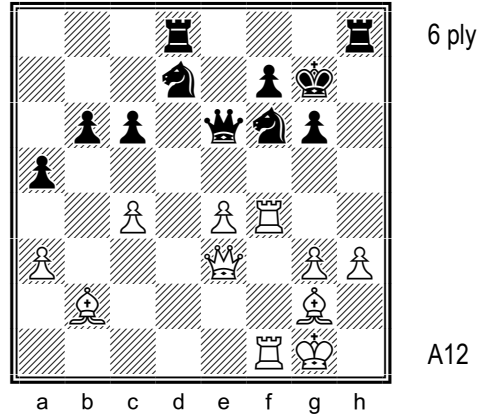
Each exercise below consists of a diagrammed position followed by a series of moves that you are asked to visualize. Using the diagrammed position as a starting point, mentally play through the moves given, keeping track of which pieces are on the board, the positions they occupy, and the material balance. Visualize the final position, then answer the questions provided. It is White to move in all exercises. An answer key at the back of the book will let you check the clarity of your vision.

The twenty-four exercises given here should allow you to become more sensitive to your ply depth barrier, that is, the point at which your vision gets cloudy. Perhaps you can clearly visualize variations that are seven or eight half-moves long, but have difficulty clearly seeing variations that run nine half-moves deep. The full-length book describes this barrier more fully, and prescribes three techniques that you can use to increase the depth of your vision.

NOTE: If you would like to print this book, we recommend using the option "Fit to Printer Margins". This will increase the size of the fonts and decrease the size of the margins. To use this option, click on "File" in the upper left hand corner of the PDF window, then select "Print". On the new window that appears, find "Page Scaling" down the left-hand side of the window and select "Fit to Printer Margins" hidden in the listing just to the right of it. Add any other printing options you desire, then click "OK" to print.

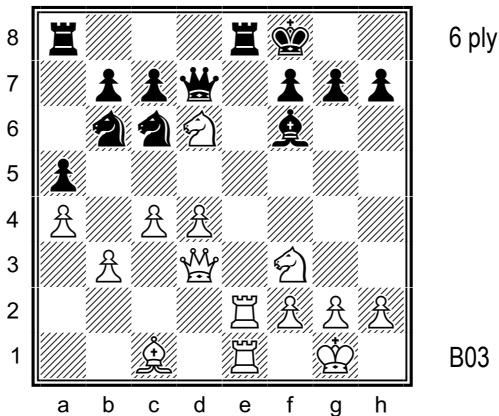


50. Black is up a pawn. The count on e8 is 3-2, but White is leading with his Queen, which is under attack. Can White take on e8? Visualize the position after the moves 28 Qxe8+ Rxe8 29 Rxe8+ Qxe8 30 Rxe8+. What is the material balance?



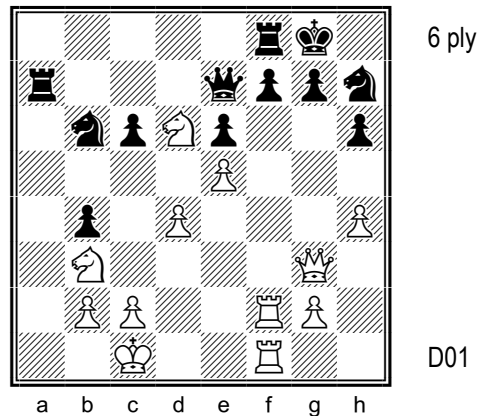
59. The count on f6 is 3-3, but two of Black's defenders are his Queen and King. Visualize the position after the moves 29 Rxf6 Nxf6 30 Bxf6+¹ Qxf6² 31 Rxf6 Kxf6. What is the material balance?

¹ 30 Rxf6 is also good. ² 30...Kh7 can be met by 31 Qg5, when White's main threaten is 32 Qh4+ and 33 Qxh8, mate.



61. The count on e8 is 3-3, but two of Black's defenders are his Queen and King. Visualize the position after the moves 18 Rxe8+ Rxe8 19 Rxe8+ Qxe8 20 Nxe8 Kxe8¹. What is the material balance?

¹ Black resigned here.



63. The count on f7 is 3-4, but one of Black's first defenders is his Queen. Visualize the position after the moves 27 Rxf7¹ Rxf7 28 Rxf7 Qxf7 29 Nxf7 Rxf7. What is the material balance?

¹ The threat of 28 Qg7 mate and 28 Rxe7 forces Black to take on f7.

CHAPTER 7. AFTER EFFECTS

This chapter features exercises in which a series of exchanges is followed by some tactic that is present in the position after the series of exchanges occurs. The following tactical themes are seen in the chapter:

- ✧ Pins – see exercises 158, 172, 191, and 192;
- ✧ Double attacks – see exercises 159, 163, 167, 168, 170, 171, 176, 177, 179, and 180;
- ✧ Forks – see exercises 166, 169, 186, and 188;
- ✧ Skewers – see exercises 173, 175, 178, 181, 182, and 185;
- ✧ Removing a defender – see exercises 160, 161, 163, 165, and 167;
- ✧ Overworked pieces or pawns – see exercises 162 and 175;
- ✧ Desperados – see exercise 190; and
- ✧ Mates – see exercises 183, 184, and 187.

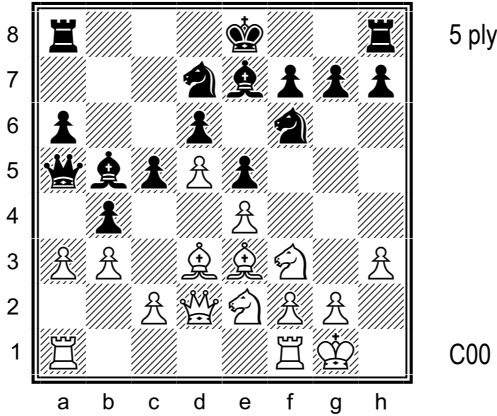
The following is a breakdown of the exercises based on the chapters presented in Section 1:

- ✧ Even Exchanges – see exercises 158, 161, 163, 176, 179, 182, and 186;
- ✧ Extra Attacker – see exercise 190;
- ✧ Pieces of Different Value – see exercises 159, 160, 162, 165, 166, 167, 168, 169, 171, 172, 174, 177, 178, 180, 183, 184, 185, 187, 188, 191, and 192;
- ✧ Penetration – see exercises 164, 170, 173, 175, 181, and 189; and
- ✧ Passed Pawn – see exercises 157, 164, 173, 174, 189.

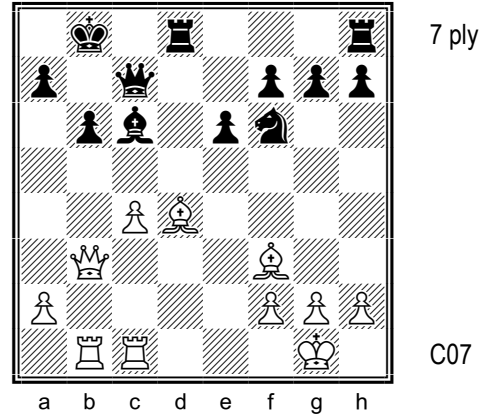
The sub-theme of leading with one's Queen is present in exercises 168, 188, and 192.

This chapter contains thirty-six exercises ranging in depth from five to fourteen half-moves, as seen in the following table:

Ply:	4	5	6	7	8	9	10	11	12	13⁺	TOTAL
Exercises:	-	2	-	6	4	16	2	2	-	4	36

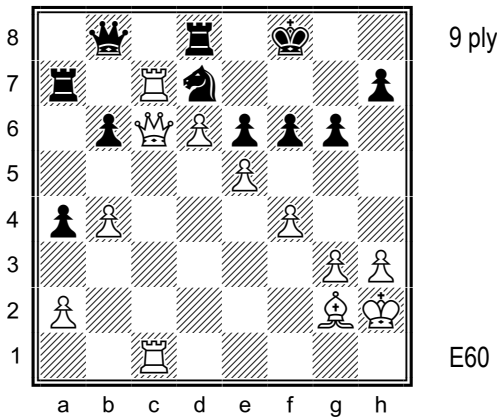


158. The count on b4 is 2-2 and 1-1 on b5. Visualize the position after the moves 14 axb4 Qxb4 15 Qxb4 cxb4. How does White win material in this position?



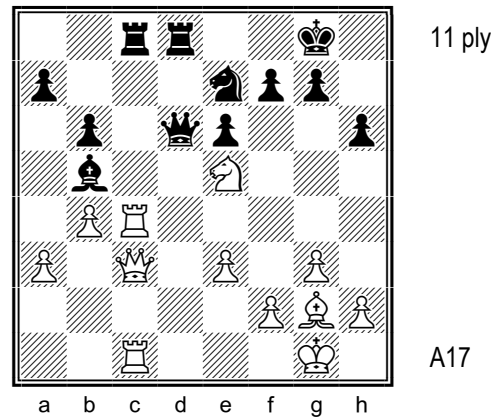
159. White is down a pawn. The count on b6 is 3-2, but one of Black's defenders is a pawn. Note that Black's Bishop on c6 is attacked as many times as it is defended, so it's potentially weak. Visualize the position after the moves 20 Bxb6 axb6 21 Qxb6+ Qxb6¹ 22 Rxb6+ Ka7² 23 Rxc6. What is the material balance?

¹ 21...Ke8 can be met by 22 Qxc6. ² 22...Kc7 doesn't change anything.



173. White is up a pawn. Visualize the position after the moves 37 Rc8 Rxc8¹ 38 Qxc8+ Qxc8² 39 Rxc8+ Kf7. How does White win material in this position?

¹ The only move. ² 38...Kf7 39 Qxb8 Nxb8 40 Rc7 is similar to the game.



188. The count on c8 is 3-2, but White's second attacker is his Queen. Visualize the position after the moves 24 Rxc8 Rxc8 25 Qxc8+ Nxc8 26 Rxc8+ Kh7. How can White win material in this position?

CHAPTER 13. EXPANDING THE POSITION

This chapter contains exercises in which a number of White pieces move up the board in concert to create or convert an advantage. Aaron Nimzovich talked about the passed pawn's "lust to expand", but such expansion applies to all of the pieces, not just the passed pawn. This chapter shows how multiple pieces can march up the board in unison to create or convert an advantage.

Typical methods utilized during expansion include the following:

- ✧ Freeing a square – see exercises 363, 371, and 392;
- ✧ Clearing a line – see exercises 365, 367, and 378; and
- ✧ Exchanging pieces to open up a line – see exercises 361 and 377.

The following exercises illustrate how to create and/or utilize a strong piece:

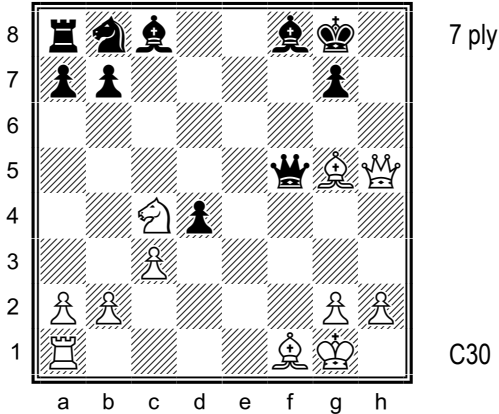
- ✧ Knight – see exercises 372, 376, and 387;
- ✧ Bishop – see exercises 364, 375, 380, 384, and 388;
- ✧ Rook – see exercises 362, 366, 368, 373, 379, and 386;
- ✧ Queen – see exercises 369, 370, and 374; and
- ✧ Queen and Knight – see exercises 389 and 391.

The following exercises prompt you to find a mate:

- ✧ Mate in one – see exercises 366 and 367;
- ✧ Mate in two – see exercises 369, 370, 371, and 386; and
- ✧ Mate in three – see exercises 372, 373, and 385.

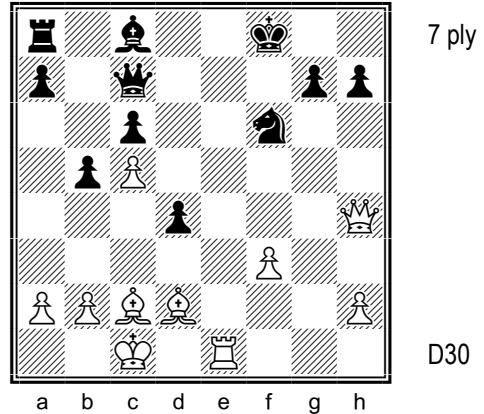
This chapter contains thirty-two exercises ranging in depth from seven to eleven half-moves, as seen in the following table:

Ply:	4	5	6	7	8	9	10	11	12	13 ⁺	TOTAL
Exercises:	-	-	-	8	-	14	2	8	-	-	32



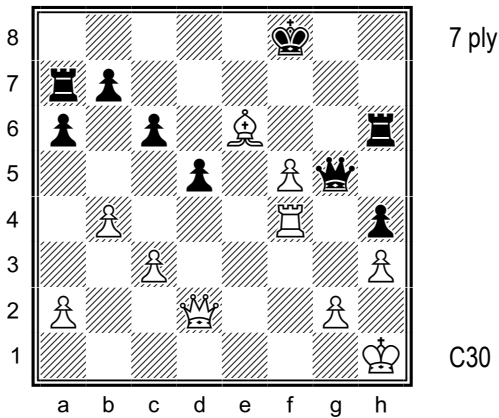
363. White is up a pawn and can bring his Rook to f1 with tempo. Visualize the position after the moves 21 Nd6¹ Bxd6 22 Bc4+ Be6 23 Rf1 Qxf1+² 24 Bxf1. What is the material balance?

¹ This move frees c4 for the Bishop, while White's next move frees f1 for the Rook. ² 23...Qe5 loses to 24 Qe8+ Kh7 25 Bd3+ Bf5 26 Bxf5, when Black has to give up his Queen to avoid mate.



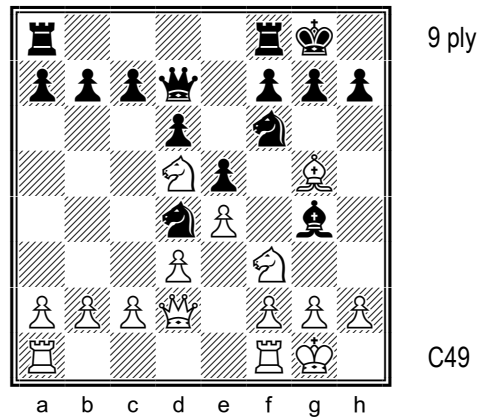
364. White is down a pawn, but can expand his position with Bb3 and Be3-d6. Visualize the position after the moves 26 Bf4 Qa5¹ 27 Bb3² Qd8³ 28 Bd6+ Qxd6 29 cxd6. What is the material balance?

¹ 26...Qd8 27 Bb3 is similar. ² Black resigned here. ³ 27...Nd5 cuts off the a2-g8 diagonal, but loses to 28 Bd6+, e.g., 28...Kf7 29 Qe7+ Kg6 30 Rg1+, followed by either 31 Qe5 or 31 Qg5, mate, or 28...Kg8 29 Re8+ Kf7 30 Rf8+ Kg6 31 Bc2+ Bf5 32 Bxf5, mate.



366. White is down the exchange but has a winning position. How does White mate in one move after the moves 29 Qd4¹ Ra8 30 Rg4 Qf6² 31 Rg8+³ Ke7?

¹ White attacks Black's Rook on a7 and unpins his Rf4 at the same time. ² 30...Qe7 allows 31 Rg8, mate; 30...Qd8 allows 31 Qg7+ Ke8 32 Qf7, mate. ³ Black resigned here.



369. Capablanca wins this symmetrical position. Visualize the position after the moves 12 Bxf6 Bxf3¹ 13 Ne7+ Kh8 14 Bxg7+ Kxg7. How does White mate in two here?

¹ 12...Nxf3+ 13 gxf3 Bh3 is met by 14 Qg5.

CHAPTER 16. DESPERADO QUEENS

This chapter contains exercises that feature a desperado Queen, that is, a Queen that voluntarily captures a protected enemy piece of lesser value. Such a desperado can be utilized to gain either a material or positional advantage, or to minimize your opponent's advantage.

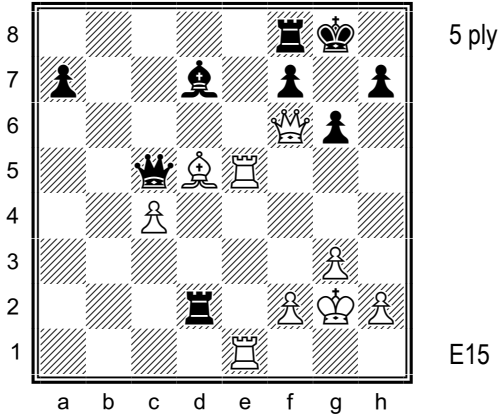
The Queen typically gives herself up in one of three ways – by capturing a piece with check, capturing a piece without check, or giving check without capturing a piece:

- ✧ Capturing a piece with check – see exercises 453, 454, 455, 461, 463, 464, 465, 466, 467, 468, 472, 473, 474, 475, and 478;
- ✧ Capturing a piece without check – see exercises 456, 457, 458, 459, 460, 462, 470, 471, 479, and 480; and
- ✧ Giving check without capturing a piece – see exercises 469 and 476.

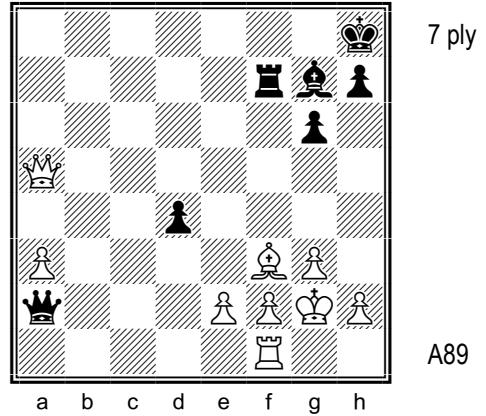
When the enemy Queen is protected, a desperado can be used to gain a material advantage if the desperado Queen can capture the piece of greater value than the piece used to capture the enemy Queen – see exercises 461, 462, 463, 464, 471, 473, and 476. On the other hand, capturing the Queen with a piece of equal value will not win material, but it can be used to break up your opponent's pawn structure – see exercises 457, 458, 459, and 475.

This chapter contains twenty-eight exercises ranging in depth from five to eleven half-moves, as seen in the following table:

Ply:	4	5	6	7	8	9	10	11	12	13⁺	TOTAL
Exercises:	-	4	6	8	4	4	-	2	-	-	28

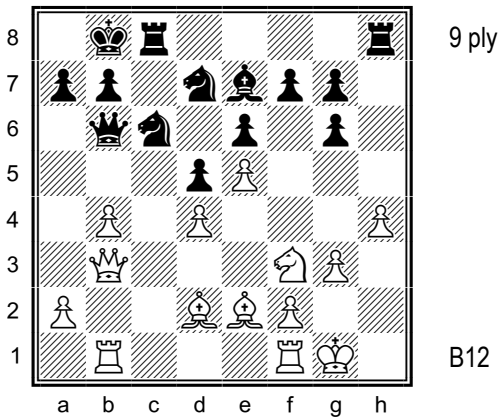


453. Visualize the position after the moves 32 Bxf7+ Rxf7 33 Qxf7+ Kxf7 34 Rxc5. What is the material balance?

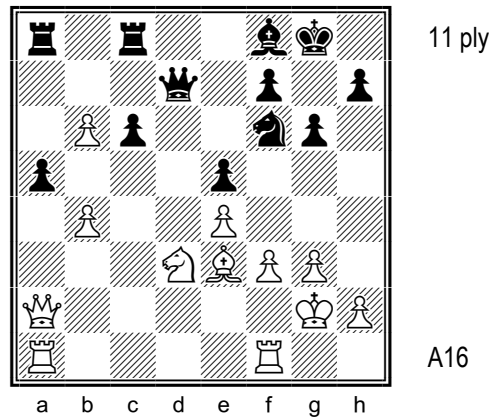


465. White is up two pawns. Visualize the position after the moves 37 Bd5 Rf5 38 Qd8+ Rf8 39 Qxf8+ Bxf8 40 Bxa2¹. What is the material balance?

¹ Black resigned here.



477. Visualize the position after the moves 19 Qa4 Nxd4 20 Nxd4 Qxd4 21 Be3 Nb6 22 Qxa7+ Kxa7 23 Bxd4. What is the material balance?



479. Visualize the position after the moves 26 Nxe5 axb4¹ 27 Qxa8 Rxa8 28 Nxd7² Rxa1 29 Nxf6+ Kg7 30 Ne8+ Kh8 31 Rxa1. What is the material balance?

¹ 26...Qe7 can be met by 27 bxa5, when 27...Qxe5 loses the exchange to 28 b7. ² Black resigned here.

CHAPTER 22. RABID PASSED PAWNS

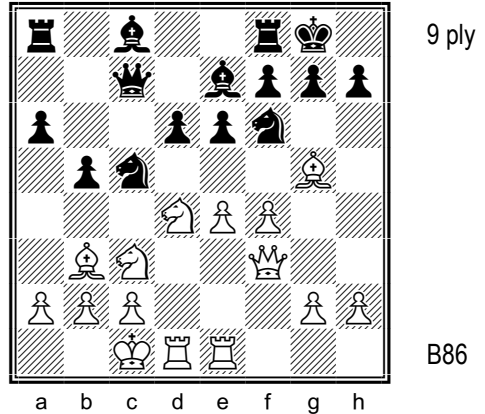
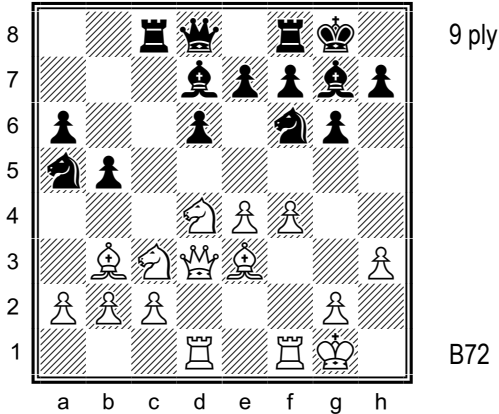
This chapter contains exercises that feature the raid of a rabid pawn into enemy territory, a raid that ends with the pawn capturing an enemy piece on the back rank and simultaneously promoting to a Queen. This “capture plus promotion” move is one of the most powerful in chess because it enables a player to gain two pieces in a single move; that is, if White’s pawn captures a Black Rook on the back rank and simultaneously promotes to Queen, then White will gain a Queen and a Rook for a pawn. The startling power of this idea is seen in exercise 637.

Typical raids found in these exercises include the following:

- ✧ The captures Pd5-c6-b7-a8/c8 – see exercises 625, 631, 647, 652, and 659;
- ✧ The captures Pe5-f6-g7-h8/f8 – see exercises 627, 630, 632, 642, 641, 644, and 648; and
- ✧ The captures Pe5-d6-c7/e7-b8/d8/f8 – see exercises 629, 633, 634, 635, 639, and 655.

This chapter contains thirty-six exercises ranging in depth from five to eleven half-moves, as seen in the following table:

Ply:	4	5	6	7	8	9	10	11	12	13⁺	TOTAL
Exercises:	-	2	6	6	4	12	4	2	-	-	36

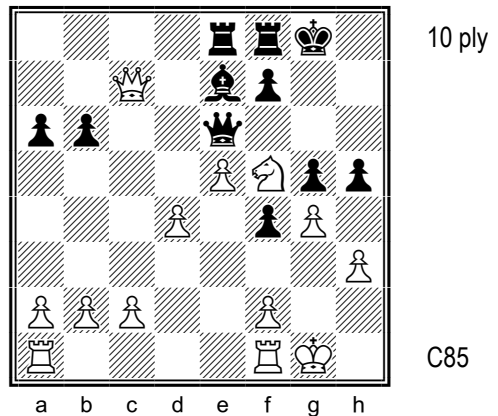
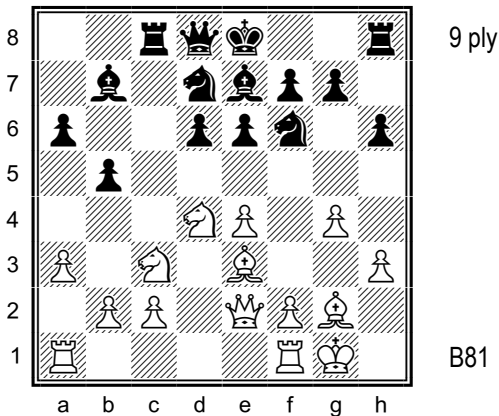


644. Visualize the position after the moves 14 e5 Nxb3 15 exf6 Nc5 16 fxg7 Nxd3¹ 17 gxf8=Q+ Kxf8 18 Rxd3. What is the material balance?

645. Visualize the position after the moves 13 e5 Bb7 14 exf6 Bxf3 15 fe7 Bxd1¹ 16 exf8=Q+ Rxf8 17 Rxd1. What is the material balance?

¹ White is up a piece after 16...Re8 17 Qe2.

¹ White has three minor pieces for the Queen after 15...Rfe8 16 Nxf3.



654. Visualize the position after the moves 13 e5 Bxg2 14 exf6 Bxf1¹ 15 fe7 Bxe2² 16 exd8=Q+ Kxd8 17 Ndx e2. What is the material balance?

656. White is up two pawns. Visualize the position after the moves 25 d5 Bd8¹ 26 dxe6² Bxc7 27 e7 hxg4 28 exf8=Q+ Kxf8 29 hxg4 Bxe5. What is the material balance?

¹ White is up a piece for a pawn after 14...Bxf6 15 Kxg2. ² 15...Qxe7 16 Rxf1 is similar to the game, except that the Queens remain on the board.

¹ 15...Qxd5 drops a Rook to Nxe7+. ² Black resigned here.

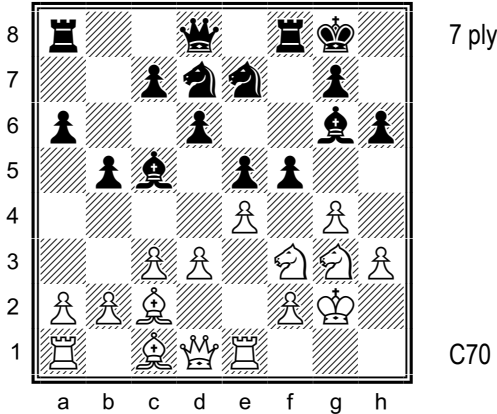
CHAPTER 25. SEEING FURTHER

This chapter contains exercises in which both players see the same variation up to a certain point, but White sees deeper into the position. The following are the solutions to these exercises:

- ✧ Find a way to win material – see exercises 725, 728, 731, 732, 736, 738, 743, and 753;
- ✧ Find the winning move or sequence – see exercises 729, 730, 733, 740, 741, 748, 749, 754, and 755;
- ✧ Find the mate in two – see exercises 727 and 742;
- ✧ Find the mate in three – see exercises 734, 735, 750, and 756;
- ✧ Find an improvement in the line given – see exercises 739 and 746; and
- ✧ Find a winning defense – see exercises 726, 737, 747, and 751.

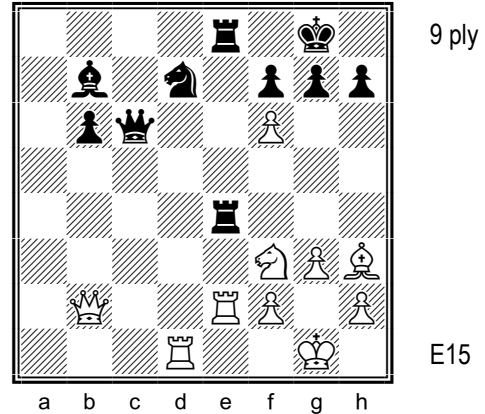
This chapter contains thirty-two exercises ranging in depth from seven to nineteen half-moves, as seen in the following table:

Ply:	4	5	6	7	8	9	10	11	12	13⁺	TOTAL
Exercises:	-	-	-	3	-	6	1	10	-	12	32



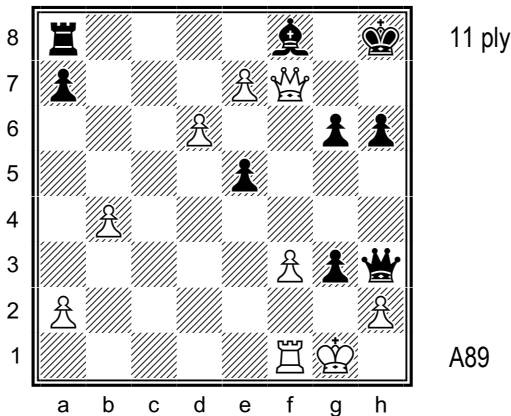
725. After the moves 17 exf5 Nxf5¹ 18 gxf5 Bxf5 White is up a piece for a pawn, but Black seems to have well-placed pieces. How does White win more material in this position? A hint is in the footnotes.²

¹ Black should just accept the loss of the pawn and play 17...Bf7. ² Hint: White can create a situation in which he is attacking two pieces at once.



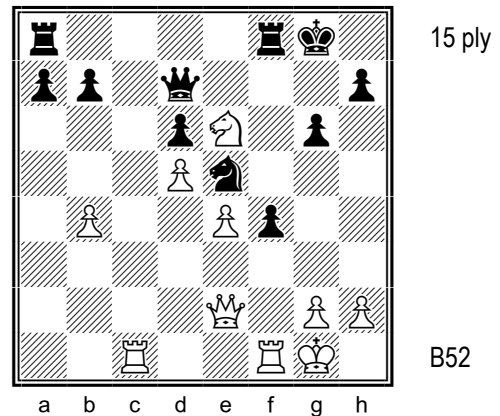
731. Visualize the position after the moves 25 Bxd7 Rxe2 26 Qxe2¹ Rxe2 27 Bxc6 Bxc6 28 Nd4 Ba4. How does White win a piece here?

¹ This Queen desperado wins material. The alternative, 26 Bxc6 Rxb2 27 Bxb7 gxf6, gives White two pieces for a Rook and pawn.



737. Black threatens mate on h2, but White to play can draw with either 28 hxg3¹ or 28 exf8=Q+ Rxf8 29 Qxf8+ Kh7 30 Qf7+ Kh8 31 Qf8+. Yet White can do better. How can White win after the moves 28 exf8=Q+ Rxf8 29 Qxf8+ Kh7? See footnote² for a hint.

¹ 28 hxg3 allows 28...Qxg3+ 29 Kh1 Qh3+, with a perpetual check. ² Hint: All White has to do is defend his pawn on h2.

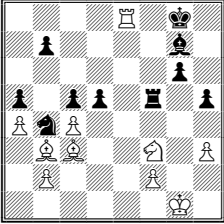


750. Black is up a pawn after 20 Rc7 Qa4 21 Qf2 Qxb4 22 Rg7+ Kh8 23 Qh4 h5 24 Qg5 Ng4¹ and threatens 25...Qb6+, with a smothered mate. Yet White mate in three here. How? See footnote² for a hint.

¹ This covers h6 and threatens a smothered mate with 25 Qxg6 Qb6+ 26 Kh1 Nf2+ 27 Kg1 (27 Rxf2 Qb1+) Nh3+ 28 Kh1 Qg1+ 29 Rxc1 Nf2. ² Hint: White can mate by getting his Queen to g7.

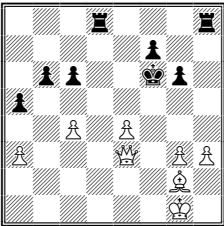
ANSWER KEY

50. Shirov-Agdestein, Bergen-Radisson SAS Match (Rapid), Bergen, Norway, 2001.



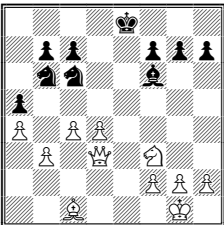
White is up a piece for a pawn (1-0, 56).

59. Casadei-Ho, Koltanowski Memorial, San Francisco, 2000.



White has a Queen and Bishop for two Rooks (1-0, 39).

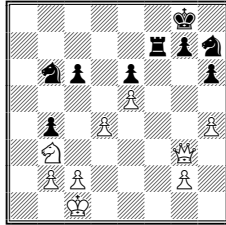
61. Hedenstroem-Naackholm, SoLett Open, Skelleftea, Sweden, 1999.



White is up a Queen and pawn for a Knight.

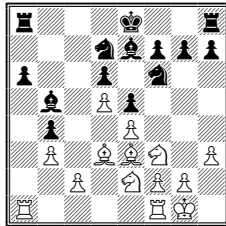
63. Soares-Borges, Paulista Championship, Americana,

Brazil, 2000.



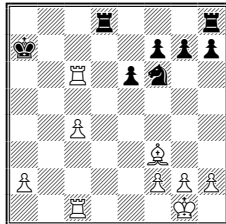
White has a Queen and pawn for Rook and Knight. The remaining moves were 30 Na5 Rc7 31 Qd3 Nf8 32 Qa6 (1-0).

158. Brien-Trelawney, London, 1851.



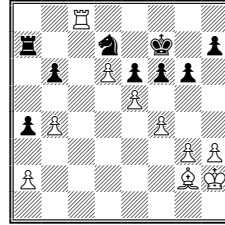
White can win a piece with 17 Bxb5 (1-0, 40).

159. Segal-Khlgatian, European Junior Championships, 1994.



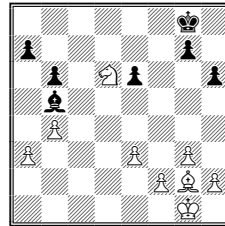
23 Rxc6 wins back the piece, leaving White up a pawn (1-0, 36).

173. Mohana-Artemieva, World Youth (Girls 10), 2004.



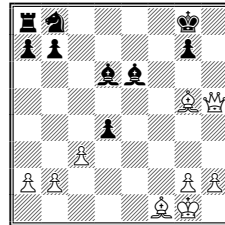
White wins with 40 Rc7 (1-0), e.g., 40... Rxc7 41 dxc7, when the pawn queens or 40... Ra6 41 Rxd7+.

188. Makarichev-Govashelishvili, USSR Junior Spartakiad, 1967.



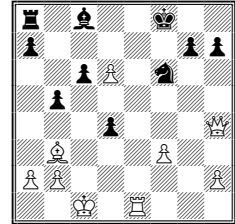
White can win material with 27 Rh8+ (1-0) Kxh8 28 Nxf7+ Kg8 29 Nxd6, when White is up a piece and a pawn.

363. Tartakower-Schlechter, St. Petersburg, Russia, 1909.



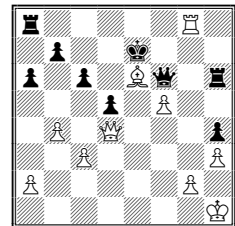
White has a Queen and pawn for a Rook and Knight (1-0, 32).

364. Alekhine-Ilija, Exhibition, Buenos Aires, Argentina, 1926.



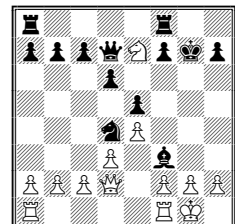
White can win Black's Queen by playing 28 Bd6+, when the threat of mate forces Black to play 28...Qxd6 29 cxd6.

366. Fedorov-Fyllingen, Aars get2net Cup GM Tournament, Aars, Denmark, 1999.



32 Qc5 is mate.

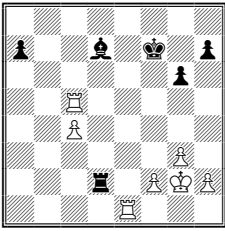
369. Capablanca-NN, New York, 1918.



White mates in two with 15 Qg5+ Kh8 16 Qf6, mate.

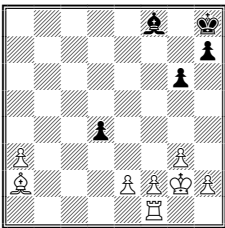
453. Smolich-Zhigalko, Belarus Championship (Under 20), Minsk, Bel-

arus, 2006.



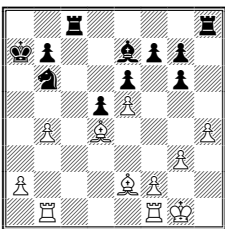
White is up the exchange and a pawn (1-0, 62).

465. Aagaard-Rewitz, Denmark Championship, Group B, 1999.



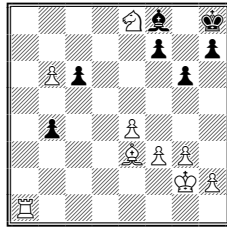
White is up a Rook.

477. Areshchenko-Ernst, 22nd ECU Club Cup, Feugen, Austria, 2006.



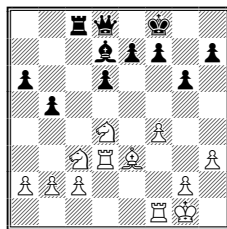
Material is even, but White has the two Bishops and a queen-side pawn majority (1-0, 37).

479. Khmiadashvili-Blagonadezhnaya, XVI Senior Women, Arvier, Italy, 2006.



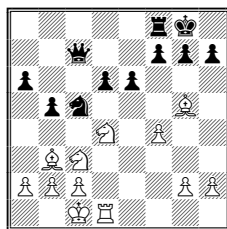
White is up a Rook and a Knight.

644. Trescher-Heinl, Bad Laasphe, Germany, 1994.



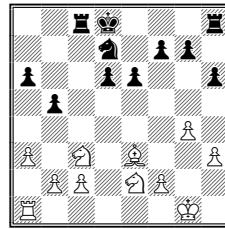
White has a Rook and two Knights for Queen and pawn. The final moves were 18...b4 19 Nd5 Rb8 20 f5 Kg7 21 Nxe7 Bb5 22 f6+ Kf8 23 Ndc6 (1-0).

645. Williams-Van der Stricht, 36th Olympiad, Spain, 2004.



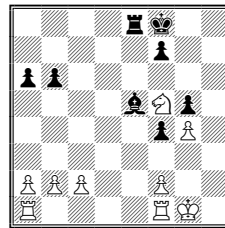
White is up three minor pieces for a Queen and a pawn, but his minor pieces aren't strong and his Kingside attack is gone, while Black can still attack on the Queenside (0-1, 52).

654. Zulfugaryi-Najer, Swidnica Open, 1999.



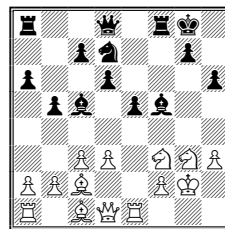
White is up two pieces for a Rook and a pawn (1-0, 41).

656. Euwe-Kramer, Match, Game 5, 1940.



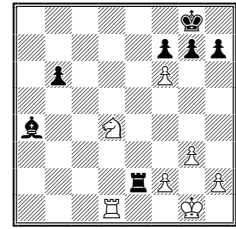
White wins a Rook.

725. Van Otten-Van Hemert, Hengelo (Under 20), Netherlands, 1996.



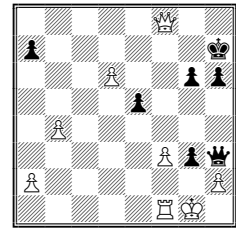
White wins more material by playing 19 Nxf5 Rxf5 20 d4, attacking two of Black's pieces at once (1-0, 23).

731. Magerramov-Lerner, Palma de Mallorca (GMA), 1989.



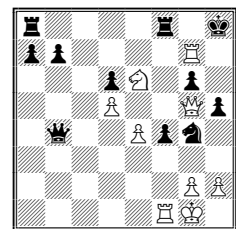
White wins a piece with 29 Ra1 (1-0), when two of Black's pieces are under attack.

737. Ingerslev-Milner Barry, Moscow Olympiad (Finals, Group A), Moscow, USSR, 1956.



White wins by protecting h2, which he can do with 30 Qe7+ Kg8 31 Qd8+ Kh7 (31...Kf7 doesn't change anything) 32 Qc7+ Kg8 33 Qc2. White has parried Black's threats and is up a Rook.

750. Larsen-Soboticanec, Zagreb (Group B), Zagreb, Yugoslavia, 1955.



White mates in three: 25 Rh7+ (1-0) Kxh7 26 Qe7+ Kh6 27 Qg7, mate.

Chess Visualization Course

BOOK 1: GENERAL TACTICS

- ✧ The *Chess Visualization Course* is a multi-volume work that provides a practical and systematic approach to improving one's chess visualization skills.
- ✧ *Chess Visualization Course, Book 1: General Tactics* contains 800 practical training exercises taken from real games, many played by international masters and grandmasters in tournaments located throughout the world.
- ✧ The positions in the book stretch your vision from one to two to three and more sectors of the board using variations that range from 4 to 39 half-moves long (most variations run 5 to 12 half-moves).
- ✧ Each of the twenty-six chapters illustrates one particular theme, many of which have not received in-depth coverage in the chess literature. Each chapter contains about thirty training exercises, which provides extensive coverage of each theme presented.
- ✧ Each exercise consists of a diagrammed position plus a series of moves and a question about the final position. Your task is to visualize the moves given and answer the question provided. An answer key allows you to check your visualization skill.
- ✧ This book describes three techniques for extending with your own personal ply depth barrier and a ply table is provided to help you quickly find the exercises you need to utilize these techniques.
- ✧ A foreword by FIDE Master Paul Whitehead describes how he became a master and describes visualization as a necessary prerequisite for making the leap to chess mastery.
- ✧ An index of ECO codes can help you find instructive middlegame positions that arise out of the openings that you play.

For about three cents per exercise, this book offers a new and valuable approach to chess visualization.

Please visit our website at www.chessvisualization.com.